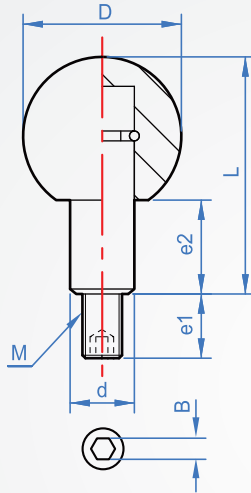
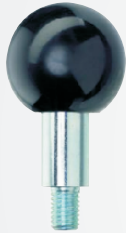
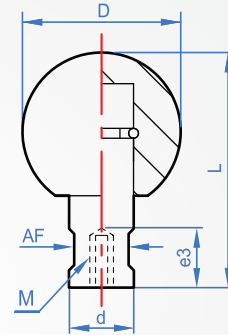


Rotary Handle
HA938
 Ball type

A : Threaded bolt

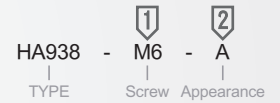


B : Female thread



Appearance	Axis	Ball
A External thread	Steel+Galvanization	Bakelite (Black)
B Internal thread	SUS+Sandblast	

How to order



1		2		Unit : mm					
M Coarse thread	Type	D	L	d	e1	e2	e3	B	AF
M6	A (Threaded bolt)	25	37.5	10	11	15	10	3	8
M8		32	48	13	13	19	12	4	10
M10	B (Female thread)	40	61	16	14	24	16	5	14
M12		50	78	20	21	31	18	6	17

※Mounted on the handwheel, handle is rotatable.