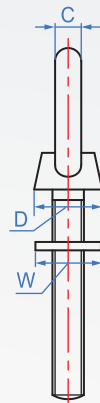
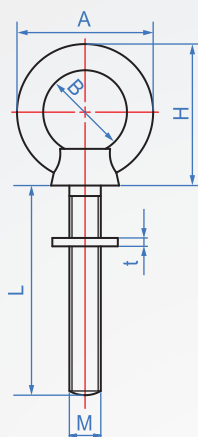
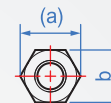


吊環加長型

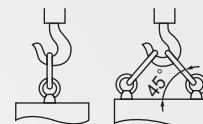
WA761



附屬螺帽



使用範例



How to order ▶

WA761 - M6 - 40
 TYPE 螺紋 長度

單位: mm

M	Pitch 粗牙		L				A	B	C	D	F	H	墊片		附屬螺帽			安全荷重 (kg)	破斷荷重 (kg)
													W	t	b	T	(a)		
M6	1.0	40	60	80	100		26	16	5	13	12	31	14	1.6	10	5	11.5	275	1100
M8	1.25		60	80	100	120	32	20	6.3	16	15	39	17	1.6	13	6.5	15	325	1300
M10	1.5			80	100	120	41	25	8	20	18	49	22	2	17	8	19.6	650	2600
M12	1.75			100	120		50	30	10	25	24	61	24	2.5	19	10	21.9	850	3400

版權所有
製必
究