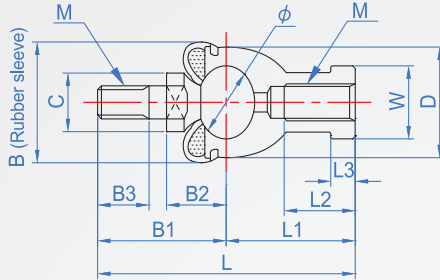
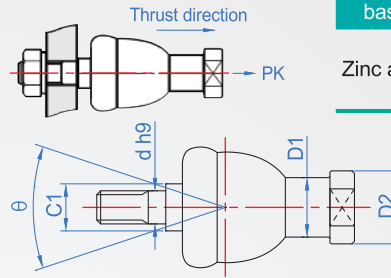


Knuckle bearing RN536

Flat type

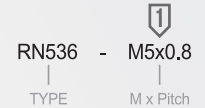


Installation example



Support base	Ball-bar	Rubber sleeve
Zinc alloy	S35C	NBR Synthetic rubber

How to order



Unit : mm

M	Pitch	Main dimensions								Ball-bar dimensions							Static load capacity			Quality (g)	
		L	L1	L2	L3	D	D1	D2	W	d	B	B1	B2	B3	C	C1	θ	Strength Pk(kgf)	Tensile Cs(kgf)		compression Cs(kgf)
M5	0.8	46	24	12	4	17	9	11	9	5	20	22	11	8	9	7	30°	290	580	1160	25
M6	1.0	55.2	28	15	5	20	10	13	11	6		27.2	12.2	11	10	8		380	760	1520	40
M8	1.25	65	32	16		6.5	24	12.5	16	14	8	24	33	16	12	10		600	1190	2370	75
M10A	1.25	74.5	35	18	6.5		28	15	19	17	10	30	39.5	19.5	15	14	11	860	1710	3420	120
M10	1.5	80.5				45.5							21		123						
M12A	1.25	84	40	20	6.5	32	17.5	22	19	12	32	44	21	17	19	17	1160	2330	4650	185	
M12	1.75	91										51		24						190	
M14A	1.5	103	45	25	8	36	20	25	22	14	38	58	23.5	22	22	19	1520	3040	6080	275	
M14	2.0	109										64		28						280	
M16A	1.5	112	50	27	8	40	22	27	22	16	44	62	25.5	23	22	19	1520	3040	6080	360	
M16	2.0	118										68		29						370	

Newton N = kgf x 9.8

Copyright © CHENA INDUSTRIAL CO.,LTD ALL Rights Reserved.