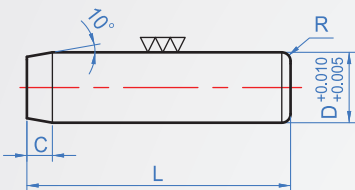


Common type  
**WA660**

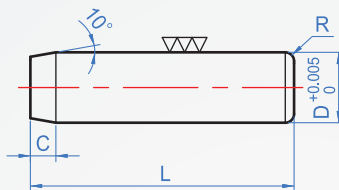


Tolerance type		Material
Standard	+0.010 +0.005	SCM445 HRC58~62
Positive tolerance	+0.005 -0	
Negative tolerance	+0 -0.005	

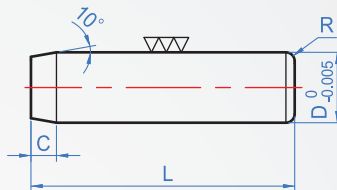
A : Standard



B : Positive tolerance



C : Negative tolerance



How to order

WA660 - 3 - 6 -

TYPE D L

Tolerance chosen

Standard.....  A

Positive tolerance....  B

Negative tolerance...  C

Feature : High precision hardness; For the shear strength required on molds and fixtures, very applicable.

1											2			Unit : mm	
D											L			C	R
3	(6)	(8)	10	15	20	25	30	35	40				1.5	0.4	
4		(8)	10	15	20	25	30	35	40	45					
5		(8)	10	15	20	25	30	35	40	45	50				
6			(10)	(15)	20	25	30	35	40	45	50	60	2.9	1	
8			(10)	(15)	20	25	30	35	40	45	50	60			
10					20	25	30	35	40	45	50	60			
12						(25)	30	35	40	45	50	60		1.5	

※ L dimensions ( ) value is only for standard WA660-A specification to use; Positive tolerance and negative tolerance can not choose.