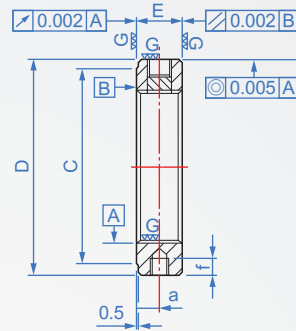
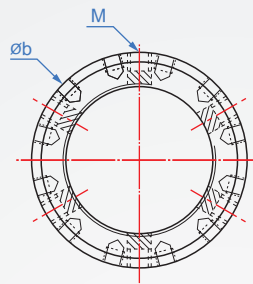


Precision Lock Nuts

## SBL-E

Superfine Balanced Locknuts



### How to order

1 2  
 SBL-E - M20 - 1.5  
TYPE      M      Pitch

										Unit : mm	
Tread	Pitch	D	C	E	a	ø b	f	M	Locking torque max. Nm	Loosening torque Nm	
M20	1	32	27	10	5	6 - M5	3	3-M5x0.8	4.5	24	
M20	1.5									24	
M25	1.5	38	33	12	6	9 - M5	4	3-M6x1.0	8	26.5	
M30	1.5	45	40							28.4	
M35	1.5	52	47	14	7	9 - M6	5			34.3	
M40	1.5	58	52							36.3	
M45	1.5	65	59	16	8	12 - M6	6			56.9	
M50	1.5	70	64							63.7	
M55	2	75	68	18	9	12 - M8	6			68.6	
M60	2	80	73							96.1	
M65	2	85	78	20	10	12 - M8	6			112.7	
M70	2	92	84							137.3	
M75	2	98	90	22	11	12 - M8	6			145.1	
M80	2	105	96							149	
M85	2	110	102	24	12	12 - M8	6			168.6	
M90	2	120	108							178.4	
M95	2	125	113	26	13	12 - M8	6			193.1	
M100	2	130	118							210.8	
M105	2	140	125	26	13	12 - M8	6			215.7	
M110	2	145	132							230.4	
M115	2	150	137	26	13	12 - M8	6			250	
M120	2	155	142							264.7	
M125	2	160	147	26	13	12 - M8	6			274.5	
M130	2	165	152							294.1	
M135	2	175	160	26	13	12 - M8	6			328.4	
M140	2	180	165							372.5	
M145	2	190	175	26	13	12 - M8	6			402	
M150	2	195	180							421.6	

※The model is for spindles with exceptionally restricted or narrow space, particularly where any adjustment from the trailing surface is inconvenient.  
 Balance adjustment screw holes can be fitted with screw-in plugs(option), eliminating high frequency noise and subsequent vibration.  
 ※The data is not as good as it is available. Please contact CHENA for the remaining dimensions.

Copyright © CHENA INDUSTRIAL CO., LTD ALL RIGHTS RESERVED.