

Slit clamp resin coupling

CH400

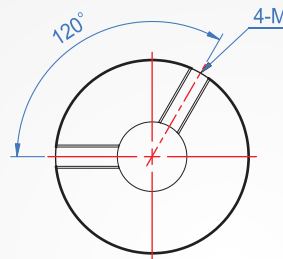
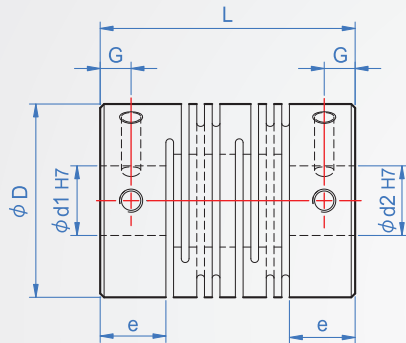
Set screw

Main part

Set screw

Engineering plastics
POM

SCM435
(Black oxide)



How to order

CH400 - 16 - 5x6 -

TYPE D d1xd2

Color chosen

Black..... B

White..... W

Unit : mm

D	d1 - d2		Color	e	L	G	M	Quality (g)	Torque (N · m)	Max. torque (N · m)	Highest number of rotations (rpm/min)	Moment of inertia (kg · m ²)	Allowable eccentric (mm)	Allowable declination (°)
	min.	max.												
16	5	~ 8	B (Black)	6.5	23	3	M3	5	0.15	0.3	6000	1.3 × 10 ⁻⁷	2.5	±0.3
20	6	~ 8	W (White)	7.5	26	3.5	M4	8	0.25	0.5	8000	4.0 × 10 ⁻⁷	2.5	±0.3
25	6	~ 12		8.5	31	4	M4	15	0.5	1.0	10000	10.0 × 10 ⁻⁷	2.5	±0.3