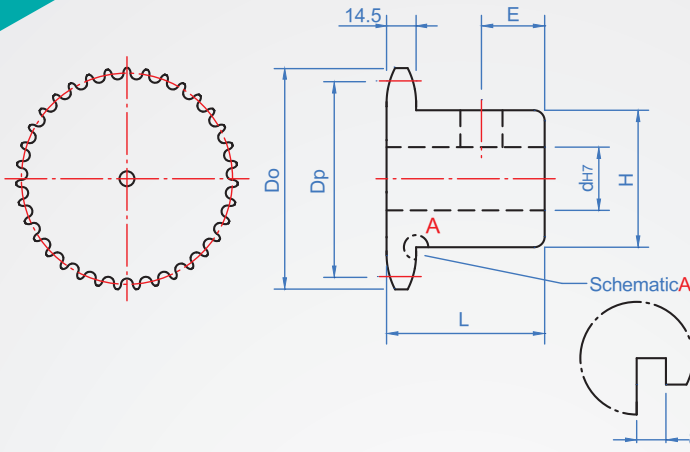


Pitch : 25.4 mm

RS80B



Note : 8-9 teeth have the part marked with *, and the wheel shell has the escape groove of processing 8.

Material	surface treatment
S45C (Tip high frequency)	—
	Black
	Electroless nickel

* Attached to the socket set screws

How to order

RS80B - 18 - N11 -

TYPE Number of teeth Hole type

Select surface treatment

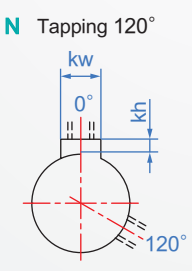
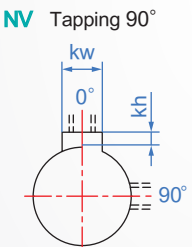
No processing.....

dye Black..... TB

Electroless nickel..... TN

Copyright © CHENA INDUSTRIAL CO.,LTD ALL Rights Reserved.

1		2								unit : mm	
Number of teeth	Dp	Do	Hole shap	dh7	H	L	E	Number of teeth	Weight (kg)		
8*	66.37	76	Keyway + Tapping	16 ~ 20	45	41.3	8	8	0.7		
9*	74.26	85			58			9	0.86		
10*	82.20	93			65			10	0.96		
11*	90.16	101	NV Tapping 90°	16 ~ 25	72	45	12	11	1.23		
12	98.14	108			77			12	1.46		
13	106.14	118			80			13	1.84		
14	114.15	127			90			14	1.99		
15	122.17	135			90			15	2.59		
16	130.20	143	N Tapping 120°	20 ~ 35	80	50	15	16	2.77		
17	138.23	151			90			17	2.96		
18	146.27	159			90			18	3.17		
19	154.32	167			95			19	3.36		
20	162.37	176			97			20	3.59		
21	170.42	184			90			21	3.82		
22	178.48	192			95			22	4.79		
23	186.54	200			97			23	5.06		
24	194.60	208			90			24	5.33		
25	202.66	216			95			25	5.62		
26	210.72	224	25 ~ 50	107	97	50	15	26	5.92		
27	218.79	233			90			27	6.23		
28	226.86	241			95			28	6.55		
29	234.93	249			97			29	6.8		
30	243.00	257			90			30	7.23		
31	251.11	265			95			31	7.5		
32	259.14	273			97			32	7.95		
33	267.21	281			90			33	8.2		
34	275.29	289	95	34	8.72						
35	283.36	297	97	35	9.13						
36	291.43	306	90	36	10.3						
37	299.51	314	95	37	10.5						
38	307.58	322	97	38	11.2						
40	323.74	338	90	40	12.1						



Chain slot New JIS_B_1301

Axis aperture	kw(Js9)	kh	Tapping
13 ~ 17	5	2.3	M6
18 ~ 22	6	2.8	
23 ~ 30	8	3.3	
31 ~ 38	10	3.3	M8
39 ~ 44	12	3.3	
45 ~ 50	14	3.8	M10