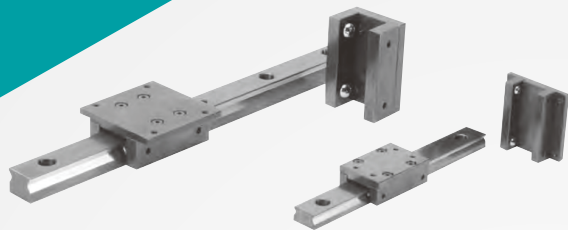
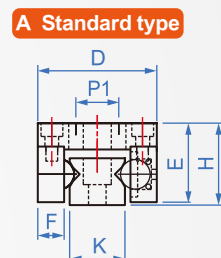
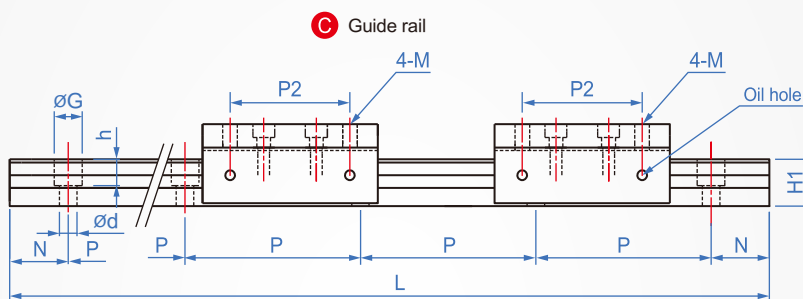
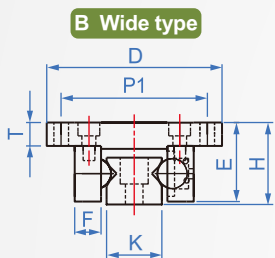
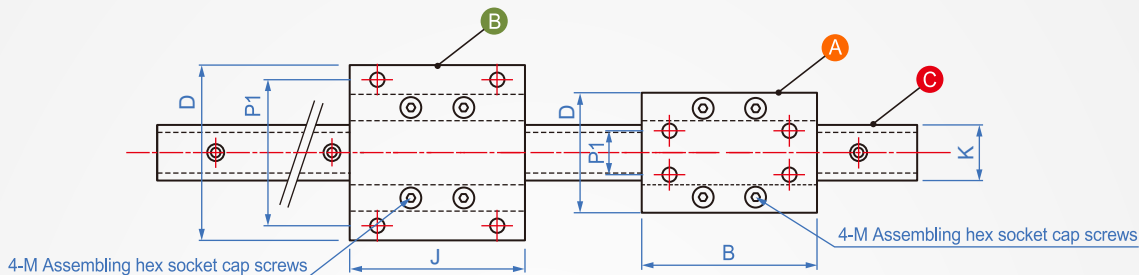


## Ball Type LB201 Carbon steel



Single item	Slide	Guide rail	Ball	Screw bolt (Assembly)
A Standard slider				
B Wide slider	S45C (Black oxide)	S45C (Black oxide)	SUS440C	SCM435 (Black oxide)
C Track				

※Advantage : Linear track using low price carbon steel version.  
 ※Exception sliding part.



※Not recommended for use in the torque load exceeds the range.

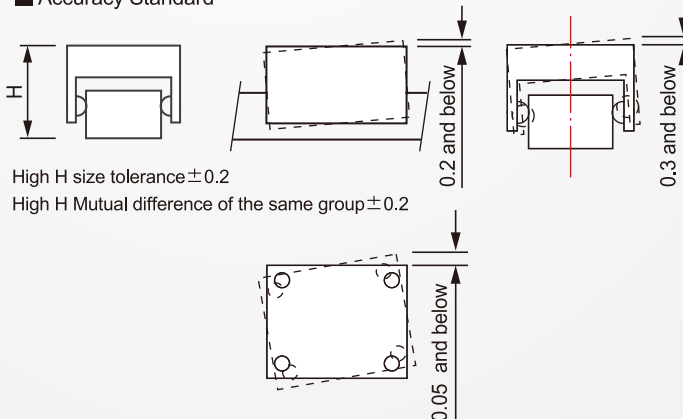
slider No.	H	Slide parts size										Guide rail parts size				Load rating N (1pcs Slide)	
		D		J	T	E	F	P1		P2	M	H1	K	dxGxh	N		P
		Standard	Wide					Standard	Wide								
A、B (slider x1)	16	30	44	44	4	15	6	13	37	34	3	9	16	4.5x8x5.5	15	40	68
	20				8	19											
2A、2B (slider x2)	24	41	60	60	4	23	9	15	50	41	4	16	19	6x9.5x9	20	60	147
	28				8	27											

※Single item slide can follow the user to increase the number of guide rail length.

kgf=Nx0.102

L (Guide rail)	Number of mounting holes	
	H16/20	H24/28
70	100	2
110	160	3
150	220	4
190	280	5
230	340	6
270	400	7
310	460	8
350	520	9
390	580	10
430	640	11
470	-	12
510	-	13
550	-	14
590	-	15
630	-	16
670	-	17
710	-	18
750	-	19
790	-	20

### Accuracy Standard



### How to order

LB201 - <sup>1</sup>A - <sup>2</sup>16 - <sup>3</sup>70  
 TYPE H L

Shopping combination  
 standard sliderX1... **A**  
 standard sliderX2... **2A**  
 wide sliderX1..... **B**  
 wide sliderX2..... **2B**

※ A、B、C can be purchased separately