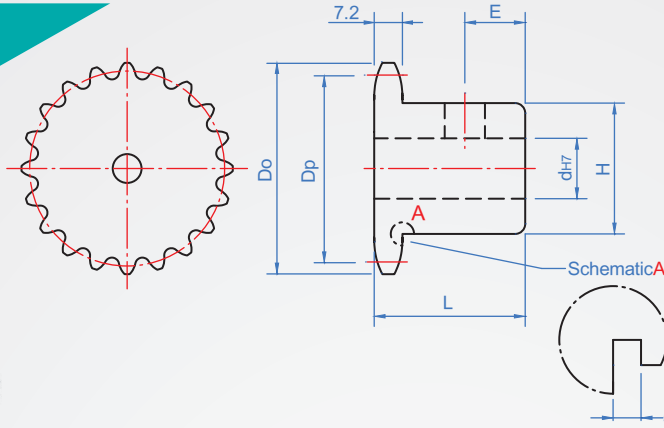


Pitch : 12.7 mm
RS40B



Note : 8~13 teeth have the part marked with *, and the wheel shell has the escape groove of processing 5.2

Material	surface treatment
S45C (Tip high frequency)	—
	Black
	Electroless nickel

* Attached to the socket set screws

How to order

RS40B - 18 - N9 -

TYPE Number of teeth Hole type

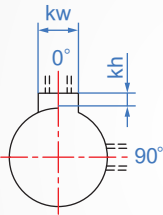
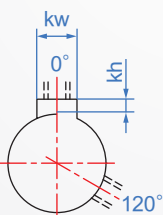
Select surface treatment

No processing.....

dye Black..... TB

Electroless nickel..... TN

Copyright © CHENA INDUSTRIAL CO.,LTD ALL RIGHTS RESERVED.

1		2									unit : mm	
Number of teeth	Dp	Do	Hole shape	dH7	H	L	E	Number of teeth	Weight (kg)			
8*	33.20	38	Keyway + Tapping NV Tapping 90°  N Tapping 120° 	8~13	25	25	7	8	0.1			
9*	37.13	42		8~14	28			9	0.11			
10*	41.10	46		8~18	32			10	0.14			
11*	45.08	51			37			11	0.18			
12*	49.07	55			40			12	0.22			
13*	53.07	59		10~20	43			13	0.22			
14	57.07	63			42	14	0.28					
15	61.08	67			46	15	0.33					
16	65.10	71		12~25	50	30	10	16	0.39			
17	69.12	76			54			17	0.45			
18	73.14	80			57			18	0.51			
19	77.16	84		60	19	0.58						
20	81.18	88		12~25	60	35	12	20	0.75			
21	85.21	92						21	0.84			
22	89.24	96						22	0.93			
23	93.27	100						23	1			
24	97.30	104						24	0.82			
25	101.33	108						25	0.85			
26	105.36	112		14~30	65	40	15	26	0.89			
27	109.40	116	27					0.93				
28	113.43	120	28					0.97				
29	117.46	124	29					1.05				
30	121.50	128	30					1.02				
31	125.53	133	31					1.2				
32	129.57	137	14~33	65	40	15	32	1.29				
33	133.61	141					33	1.3				
34	137.64	145					34	1.39				
35	141.68	149					35	1.44				
36	145.72	153					36	1.48				
38	153.79	161					38	1.58				
40	161.87	169	17~40	70	40	15	40	1.7				
41	165.91	173					41	1.82				
42	169.95	177					42	2.02				
43	173.98	181					43	2.23				
44	178.02	185					44	2.14				
45	182.06	189					45	2.41				
48	194.18	201	17~40	73	40	15	48	2.41				
50	202.26	209					50	2.55				
54	218.42	226					54	2.85				
60	242.66	250					60	3.34				

Chain slot New JIS_B_1301			
Axis aperture	kw(Js9)	kh	Tapping
8 ~ 10	3	1.4	M4
NK10	4	1.8	M5
11 ~ 12	4	1.8	
13 ~ 17	5	2.3	M6
18 ~ 22	6	2.8	
23 ~ 30	8	3.3	M8
31 ~ 38	10	3.3	
39 ~ 40	12	3.3	