

# 6

## Steel ball latch

Labor-saving base energy

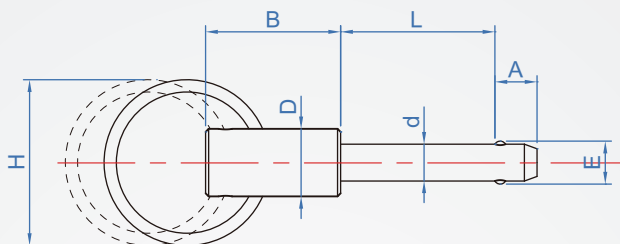
# AV616

SUS

※Structural features:

The steel ball can be hidden by lifting the lifting ring, so the aperture will not be deformed after long-term use.

Steel ball	Pin	Spring	Ring
SUS	SUS303	SUS	SUS



How to order

AV616 - <sup>1</sup>10 - <sup>2</sup>30  
 TYPE Diameter Length

<sup>1</sup>													<sup>2</sup>													unit: mm	
d	E						L						A	B	H	D	Corresponding Hole	tolerance H8									
$-0.04$ $-0.08$							$+0.5$ $-0$						$(\pm 0.2)$														
5	5.5	10	15	20	25	30							6				5	+0.018									
6	7	10	15	20	25	30	35	40	50				7	22		11	6	-0									
8	9.5			20	25	30	35	40	50				8		30		8	+0.022									
10	12			20	25	30	35	40	50	60	65	70	9				10	-0									
12	14.5				25	30	35	40	50	60	65	70	10	27		16	12	+0.027									
16	19				25	30	35	40	50	60	65	70	80	100	14	32	19	16	-0								

\*L size length can be customized

Che Na

FAX 886-2688-3177

info@chena.com.tw

886-22688-3188  
886-2688-3881~3

No.21, Guangrong St. Shulin Dist.,  
New Taipei City 238 Taiwan (R.O.C.)