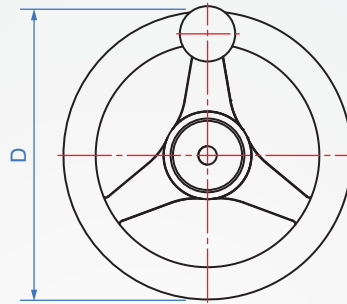
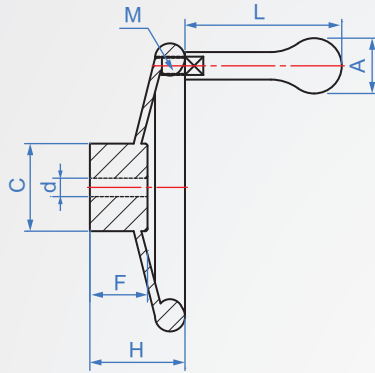


Iron
YE964
Three-piece



Body		Rotary handle	
Material	Finish	Material	Finish
Cast Iron F20	Chrome plating	Aluminum zinc alloy	Chrome plating
	Sandblasting		



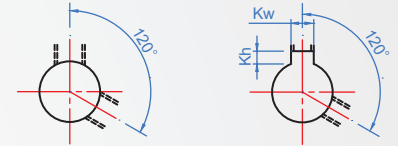
How to order

1 YE964 - 150 - N10 - CR
TYPE D Specified hole

Select surface treatment

Electroplating chrome..... CR
 Sandblasting..... SN

P Round hole + tapping 120° **N** Keyway + tapping 120°



Shaft hole P, N size table

1		2		unit : mm						
D	d	Hole shape	Aperture	C	F	H	Rotary handle			weight kg
							A	L	M	
150	8	P	8~16	42	29	44	28	83	3/8"	1.7
175					30	45				2.4
200		N	10~22	47	31	50				2.9
210					34	53				4.5

unit : mm			
Shaft aperture	Kw	Kh	Tapping
8~10	3	1.4	M4
11~12	4	1.8	
13~17	5	2.3	M5
18~22	6	2.8	M6

(New JIS B 1301)
No.21, Guangrong St. Shulin Dist.,
New Taipei City 238 Taiwan (R.O.C.)