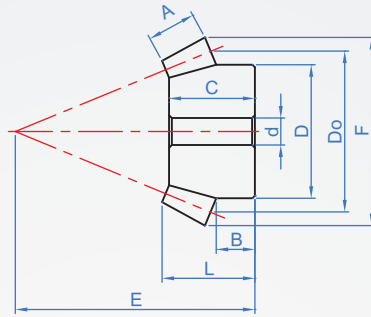
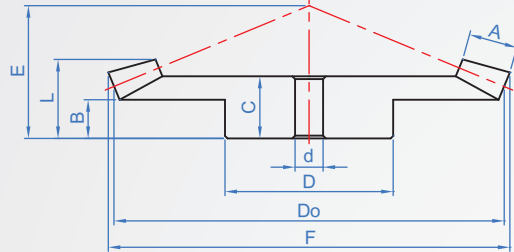
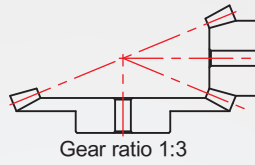
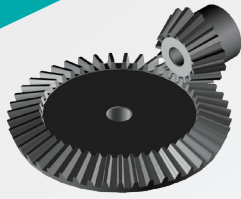


Pressure angle 20°
BG323
 Tooth ratio 1:3



Material	Finish
S45C	-
	Dye black
	Electroless nickel

How to order

1 2 3
 BG323 - M2 - 20 - N10 - TB
Modulus Number of teeth Hole shape Shaft diameter

Select surface treatment

S45C..... T
 S45C+Dye black..... TB
 S45C+Electroless nickel..... TN

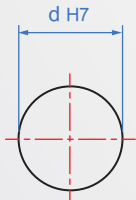
D path change can be specified
 Example: original D diameter 34.5, change 30

				unit : mm								
Modulus	Number of teeth	Minimum aperture d	Gear ratio	A	B	C	D	Do	Number of teeth	E	F	L
M1.5	15	8~	4515	10	13.1	22.75	18	22.5	15	47.42	25.28	23.49
	45	10~			11.5	18.74	40	67.5	45	28.06	68.45	21
M2	15	10~	4515	15	14.34	29.05	24	60	15	60.34	33.7	30
	45	12~	6020		17.5	28.15	65	90	45	39.96	91.26	31
	20	10~			19.37	33.94	34.5	40	20	80.29	43.79	35
M2.5	60	20~	6020	20	26	46.82	60	120	60	63.81	121.26	50
	15	12~			19.05	38.85	30	37.5	15	76.76	42.13	40
	45	15~			21.5	34.54	70	112.5	45	48.85	114.08	38
	20	16~			24.27	43.70	43	50	20	100.44	54.74	45
M3	60	20~	6020	20	25	46.10	70	150	60	66.90	151.58	50
	15	15~			20.86	43.58	35	45	15	90.03	50.56	45
	45	18~			21.5	34.74	80	135	45	52.03	136.9	39
	20	15~			25.77	48.42	50	60	20	117.46	65.69	50
M4	60	25~	6020	23	24	46.26	90	180	60	71.57	181.9	51
	15	16~			22.92	52.09	49.5	60	15	114.67	67.41	53.97
	45	20~			23	45.29	90	180	45	68.92	182.53	51
M5	15	20~	4515	30	30	64.55	60	75	15	145.18	84.26	67
	45	25~			20	42.65	120	225	45	73.09	228.16	50

※Please note: It is not allowed to purchase in one piece. Because the combination angle with other companies may cause the teeth to be unable to bite, it must be ordered in sets.

Copyright © CHENA INDUSTRIAL CO., LTD ALL RIGHTS RESERVED.

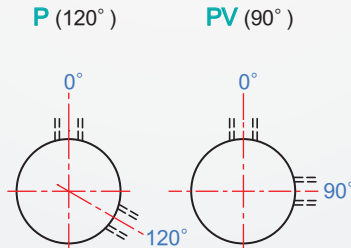
H Round hole



Select the type of gear

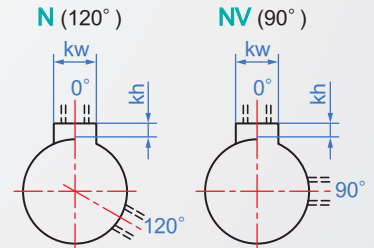
The speed is not high, and the spur gear can be used as the bevel gear. When the speed is high, it is necessary to use a bevel gear or a bevel gear with a higher precision.

Round hole + tapping



Shaft aperture	Tapping
4~5	M3
6~12	M4
13~17	M5
18~30	M6
31~44	M8
45~65	M10

Keyway + tapping



New JIS_B_1301

Shaft aperture	kw(Js9)	kh	Tapping
8~10	3	1.4	M4
NK10	4	1.8	
11~12	4	1.8	
13~17	5	2.3	M5
18~22	6	2.8	M6
23~30	8	3.3	
31~38	10	3.3	M8
39~44	12	3.3	