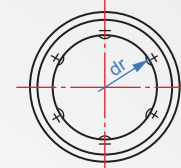
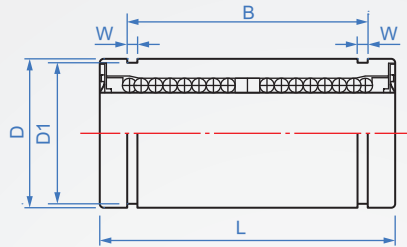


LM234 Extended type

Main part	Steel ball	Holder	Operating temperature	Accessory
SUJ2 HRC58~	SUJ2	Resin	-20~80°C	2-sides dust cover



How to order

LM234 - 6L
TYPE d

Unit : mm

dr	Tolerance value	Main size & accuracy							Number of ball columns	Eccentric max.	Rated load(kgf)		Weight (g)		
		D	Tolerance value	D1	L	Tolerance value	B	Tolerance value			W	C(N)		Co(N)	
6L	+0 -0.010	12	+0	11.5	35	+0 -0.3	27	+0 -0.2	1.1	4	0.015	320	520	16	
8L		15	-0.013	14.3	45		35					1.3	430	780	31
10L		19	+0 -0.016	18	55		44						1.6	580	1100
12L		21		20	57		46		1.85			650		1200	80
13L		23		22	61		46					0.020		810	1570
16L		28		27	70		53		6				1230	2350	145
20L	+0 -0.012	32	+0	30.5	80	61	1.85	1400		2750	180				
25L		40	-0.019	38	112	+0		1.85		1560	3140	440			
30L		45	-0.019	43	123	-0.4	89		-0.3	2490	5490	580			

※Suggest using g6 tolerance guides.

1N=0.12kgf

Copyright © CHENA INDUSTRIAL CO.,LTD ALL RIGHTS RESERVED.