

Ceramic washer WA799

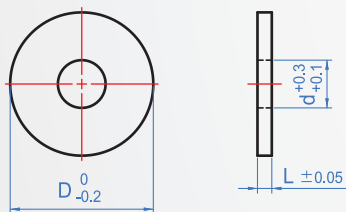
Ceramics (Alumina 95)

Ceramics in abrasion resistance, heat resistance is very good, compared with ordinary steel has greater bending length, less elastic changes, in the chemical is a very stable material. Although there are easily broken, poor processability disadvantages, but lightweight hard, high-temperature heat resistance and excellent insulating properties, from precision machinery to vacuum machines are widely used. Due to the high purity alumina, when used at high temperatures, more volatile impurities can be suppressed and the slide abrasion resistance sre excellent too.

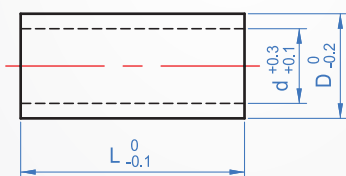
Feature distinguish	Unit	Alumina 99	Alumina 95	Zirconia	Steel S45C
Insulation breakdown strength	KV/mm	18	16	15	—
Volume resistivity	Ω -cm	$>10^{12}$	$>10^{12}$	$>10^{12}$	—
Bending strength	KN/cm ²	>35	>29	>110	—
Compressive strength	KN/cm ²	300	250	250	—
Expansion	1/°C	8×10^{-6}	7.8×10^{-6}	10×10^{-6}	13.6
Thermal conductivity	W/m . K	31	22	3	52
Heat resistance	°C	1500	1400	1500	—
Water absorption	%	0	0	0	0
Proportion	g/cm ⁵	3.85	3.6	5.9	7.8
Hardness	HV	1700	1600	1400	130
Main material	-	A1203(>99%)	A1203(>95%)	ZrO2(>94%)	S45C

Reference : Table of information is the average value of the material.
It is the frangible material, please be careful.

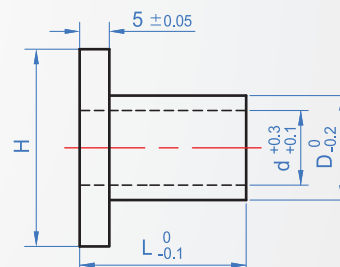
Washer type A



Collar type B



Flange type F



How to order

WA799 - 3 - 3 -
 TYPE d L

Choose appearance

Washer type..... A
 Collar type..... B
 Flange type..... F

1	2	Unit : mm	
d	L	D	
3	3	10	
4	3	12	
5	3	15	
6	3	20	
8	3	25	
10	3	30	

1	2	Unit : mm	
d	L	D	
Designation 1mm			
3	5 ~ 50	6	
4	5 ~ 50	8	
5	5 ~ 50	10	
6	5 ~ 50	10	
8	5 ~ 50	12	
10	5 ~ 50	14	

1	2	Unit : mm		
d	L	D		H
Designation 1mm				
3	10 、 15	6		10
4	10 、 15	8		12
5	10 、 15	10		15
6	10 、 15	10		20
8	10 、 15 、 20	12		25
10	10 、 15 、 20	14		30