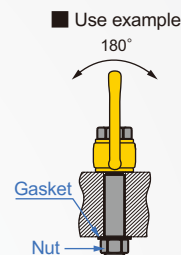
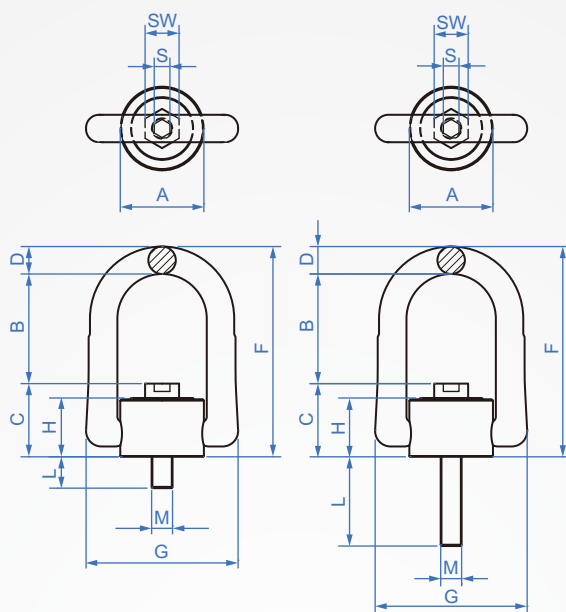


Ring
KA769
Lifting rotation

Part	Material
Ring	Forged alloy steel
Bolt	Steel

Suitable for force range 180°



How to order

KA769 - M8 - 12
TYPE M L

Ultimate load Tons	1		2		SW	B	C	A	G	R	F	S	D	H	Locking torque Nm	weight kg	
	M	Pitch	Short thread	Long thread												Short thread	Long thread
0.5	M8	0.5	12	83	13	42	28	33	58	17	80	6	11	23	30	0.3	0.3
0.7	M10	0.7	15	103	17	41	29					8			60	0.3	0.4
1	M12	1	20	128	19	40	31					10			100	0.3	0.4
2	M16	2	24	149	24	54	46	50	90	27	117	12	17	36	120	0.9	1.1
3	M20	3	30	194	30	52	49	50	90	27	117	12	17	36	250	1	1.4
5	M24	5	36	221	36	81	59	72	125	37	163	14	25	44	400	2.6	3.2
7.8	M30	7.8	48	278	46	94	81	87	148	46	204	17	30	62	500	5.0	6.3
12.5	M36	12.5	54	225	55	112	98	110	188	57	247	22	36	75	1000	9.6	10.9

Ring load table

Hanging icon	Load limit Tons									
	1	2	1	2	2	2	2	3~4	3~4	3~4
Count	1	2	1	2	2	2	2	3~4	3~4	3~4
Load angle	0°	0°	90°	90°	0° ~ 45°	45° ~ 60°	Asymmetrical on both sides	0° ~ 45°	45° ~ 60°	Asymmetrical on both sides
Thread	Load limit Tons									
M8	0.8	1.6	0.5	1	0.7	0.5	0.5	1.1	0.8	0.5
M10	1.2	2.4	0.7	1.4	1	0.7	0.7	1.5	1.1	0.7
M12	2	4	1	2	1.4	1	1	2.1	1.5	1
M16	3.2	6.4	2	4	2.8	2	2	4.2	3	2
M20	5.6	11.2	3	6	4.2	3	3	6.3	4.5	3
M24	9.2	18.4	5	10	7	5	5	10.5	7.5	5
M30	12	24	7.8	15.6	10.9	7.8	7.8	16.4	11.7	7.8
M36	14	28	12.5	25	17.5	12.5	12.5	26.3	18.8	12.5

※Note

- It can be rotated by 360° and rotated by 180°, and can be adjusted in any direction.
- All rings are manufactured in accordance with the relevant European standard EN1677-1.
- The wrought alloy steel used on the rotating sling is quenched and tempered.
- Batch numbers are printed on all forged parts and cap screws to facilitate inspection and verification on the quality certification instructions.
- The bolt is a uniform metric thread (ASME/SNSI B18.3.1 M) with DIN EN ISO 4762.
- Verify that the load is 2.5 times the load limit.
- The force of 1.5 times the load limit was tested for 20,000 fatigue limits.
- Only the screw holes are required for the object to be lifted, and it can be installed with a flat head/head wrench or an Allen key.