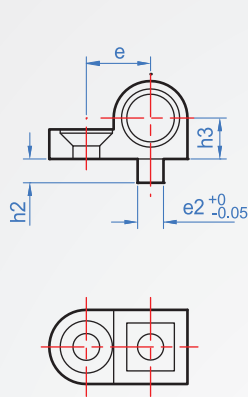


Press-in Type BB609

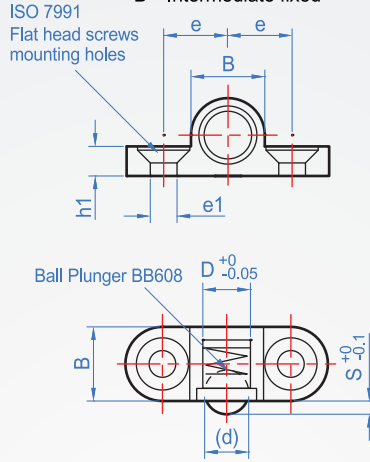
Material	Finish
Zinc alloy die casting	Nickel plating



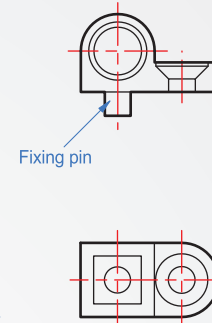
L : Left-hand fixing



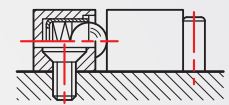
B : Intermediate fixed



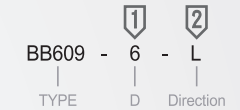
R : Right-hand fixing



Installation example



How to order



No	Direction	(d)	S	Tolerance ± 0.05		B	D	Flat head screws mounting holes		e2	h2
				e	h3			e1	h1		
6	L (Left-hand fixing)	5	1.5	7.5	4.25	8.5	6	3.2(For M3)	3.2	3	3
	B (Intermediate fixed)										
8	R (Right-hand fixing)	6.5	1.8	9.5	5.25	10.5	8	4.3(For M4)	4.2	4	4

Unit : mm

※Without adhesive can be fixed tight press-in type ball plunger(BB608 series) used on the machine.

Load (kgf)=Load N × 0.101972