

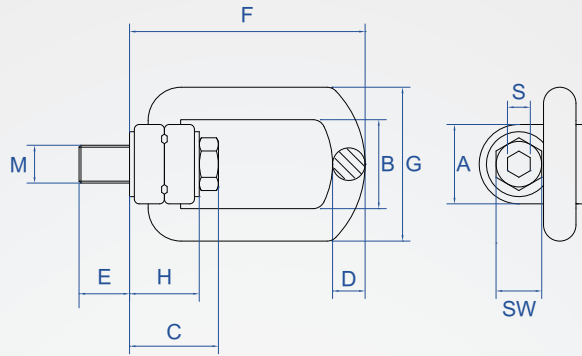
Rings - Imperial

YB769

side pull
rotation



Can be rotated 360°



| Part | Material |
|-------|--------------------|
| Rings | Forged alloy steel |
| Bolt | Alloy steel |

How to order

YB769 - M12
TYPE M

| limit load Tons | Metric Coarse Teeth | | American Coarse Teeth | | *E | WS | S | A | H | F | D | B | G | C | Tightening torque N · m | quality (kg) |
|--------------------|------------------------|------|--------------------------|-----|----|----|----|----|----|-------|------|-----|-----|-----|-------------------------------|-----------------|
| | Pitch | UNC | | | | | | | | | | | | | | |
| 0.3 | M8 | 1.25 | 5/16" | 18 | 11 | 13 | 6 | | | | | | | | 42 | 30 |
| 0.63 | M10 | 1.5 | 3/8" | 16 | 16 | 16 | | | | | | | | | | |
| 1 | M12 | 1.75 | 7/16" | 14 | 18 | 18 | 8 | 34 | 36 | 98.5 | 14 | 37 | 57 | 45 | 100 | 0.5 |
| 1.2 | M14 | 2 | 1/2" | 13 | 21 | 21 | | | | | | | | | | |
| 1.5 | M16 | | 5/8" | 11 | 24 | 24 | 10 | | | | | | | 48 | 150 | |
| 2 | M18 | 3/4" | 10 | 26 | 27 | | | | | | | | | | | |
| 2.5 | M20 | 2.5 | 7/8" | 9 | 30 | 30 | 12 | 50 | 44 | 143 | 16.5 | 54 | 82 | 57 | 200 | 1.5 |
| 3 | M22 | | — | — | 30 | 34 | | | | | | | | | | |
| 4 | M24 | 3 | 1" | 8 | 36 | 36 | 14 | | | | | | | 61 | 400 | |
| 4 | M27 | 3 | — | — | 38 | 41 | | | | | | | | | | |
| 5 | M30 | 3.5 | 1-1/4" | 7 | 48 | 46 | 17 | 60 | 62 | 170 | 22 | 65 | 99 | 80 | 400 | 3 |
| 6 | M33 | | — | — | 54 | 55 | | | | | | | | | | |
| 7 | M36-A | 4 | — | — | 54 | 55 | 22 | | | | | | | 85 | 700 | 3.5 |
| 8 | M36-B | 4 | — | — | 62 | 55 | | | | | | | | | | |
| 8 | M39 | 4 | 1-1/2" | 6 | 62 | 55 | 22 | 77 | 79 | 226.5 | 27 | 85 | 123 | 104 | 800 | 6 |
| 10 | M42-A | 4.5 | — | — | 72 | 65 | | | | | | | | | | |
| 15 | M42-B | 4.5 | — | — | 63 | 65 | 22 | 95 | 90 | 257.5 | 36 | 104 | 158 | 117 | 1500 | 11 |
| | M45 | | 1-3/4" | 5 | | | | | | | | | | | 1600 | |
| 20 | M48 | 5 | 2" | 4.5 | 72 | 75 | 27 | | | | | | | 120 | 2000 | 12 |

* E size thread length, can be customized.

※ Notice

- The ring body can be rotated with the direction of the force to adjust the force angle.
- Different load directions can lift different loads, but 4 times the safety factor is guaranteed.
- Complete thread specifications and wide range of rated loads can be customized according to customer requirements.
- 100% passed the 6g go-stop gauge inspection and can be adapted to precise threaded holes.
- The inner space of the ring body is large and can be linked with various hooks of spreaders. The ring body has a built-in positioning circlip device, which is more convenient to control and can be placed flat at any angle. The outer hexagon + inner hexagon design is convenient and quick to install.
- The thread is made of alloy steel 42CrMo by precision forging, the tensile strength σ_b before heat treatment is 1080MPa, and the mechanical properties are improved after quenching and tempering. The surface of the lifting ring is electrostatically sprayed to improve the surface anti-corrosion ability.

■ Lifting ring load chart

| hanging icon | | | | | | | | | | | hanging icon |
|--------------|-----------------|------|------|------|--------|---------|--------------|--------|---------|--------------|--------------|
| load angle | 1 | 2 | 1 | 2 | 2 | 2 | 2 | 3~4 | 3~4 | 3~4 | load angle |
| thread | 0° | 0° | 90° | 90° | 0°~45° | 45°~60° | asymmetrical | 0°~45° | 45°~60° | asymmetrical | thread |
| M | load limit Tons | | | | | | | | | | INCH |
| M8 | 0.3 | 0.6 | 0.3 | 0.6 | 0.42 | 0.3 | 0.3 | 0.63 | 0.45 | 0.3 | 5/16 |
| M10 | 0.63 | 1.26 | 0.63 | 1.26 | 0.88 | 0.63 | 0.63 | 1.32 | 0.95 | 0.63 | 3/8 |
| M12 | 1 | 2 | 1 | 2 | 1.4 | 1 | 1 | 2.1 | 1.5 | 1 | 7/16 |
| M14 | 1 | 2 | 1 | 2 | 1.4 | 1 | 1 | 2.1 | 1.5 | 1 | — |
| M16 | 1.5 | 3 | 1.5 | 3 | 2.1 | 1.5 | 1.5 | 3.1 | 2.2 | 1.5 | 5/8 |
| M18 | 2 | 4 | 2 | 4 | 2.8 | 2 | 2 | 4.2 | 3 | 2 | — |
| M20 | 2.5 | 5 | 2.5 | 5 | 3.5 | 2.5 | 2.5 | 5.2 | 3.7 | 2.5 | 7/8 |
| M22 | 3 | 6 | 3 | 6 | 4.2 | 3 | 3 | 6.3 | 4.5 | 3 | — |
| M24 | 4 | 8 | 4 | 8 | 5.6 | 4 | 4 | 8.4 | 6 | 4 | 1 |
| M27 | 4 | 8 | 4 | 8 | 5.6 | 4 | 4 | 8.4 | 6 | 4 | — |
| M30 | 5 | 10 | 5 | 10 | 7 | 5 | 5 | 10.5 | 7.5 | 5 | 1-1/4 |
| M33 | 6 | 12 | 6 | 12 | 8.5 | 6 | 6 | 12.7 | 9 | 6 | — |
| M36-A | 7 | 14 | 7 | 14 | 9.8 | 7 | 7 | 14.7 | 10.5 | 7 | — |
| M36-B | 8 | 16 | 8 | 16 | 11.2 | 8 | 8 | 16.8 | 12 | 8 | — |
| M39 | 8 | 16 | 8 | 16 | 11.2 | 8 | 8 | 16.8 | 12 | 8 | 1-1/2 |
| M42-A | 10 | 20 | 10 | 20 | 14 | 10 | 10 | 21 | 15 | 10 | — |
| M42-B | 15 | 30 | 15 | 30 | 21 | 15 | 15 | 31.5 | 22.5 | 15 | — |
| M45 | 15 | 30 | 15 | 30 | 21 | 15 | 15 | 31.5 | 22.5 | 15 | 1-3/4 |
| M48 | 20 | 40 | 20 | 40 | 28 | 20 | 20 | 42 | 30 | 20 | 2 |

Copyright © CHENA INDUSTRIAL CO., LTD ALL RIGHTS RESERVED.