

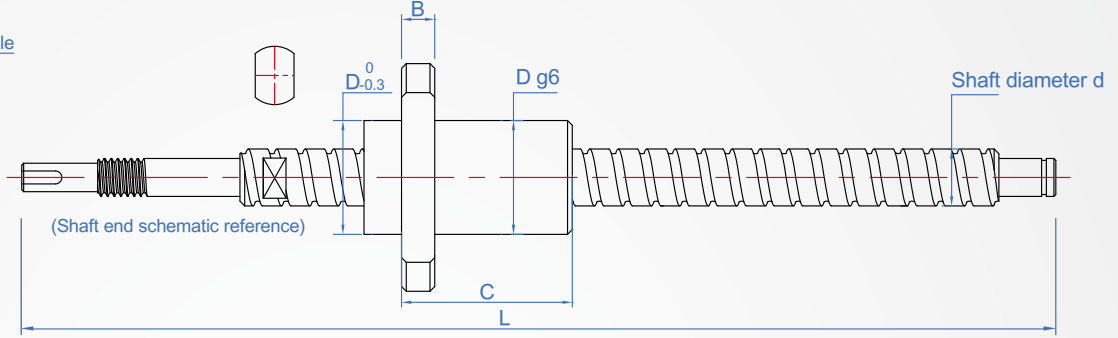
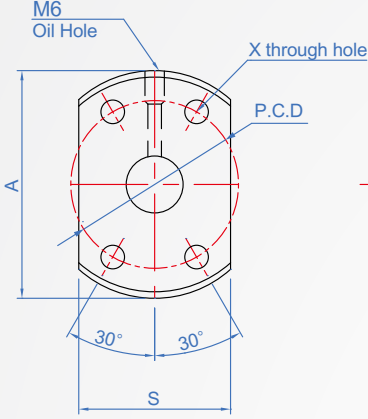
Shaft diameter 16~50

E series

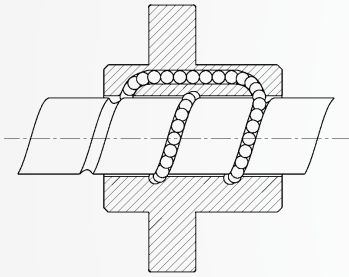
High/Ultra High Lead



精度	螺桿	軸部硬度		螺帽	
		材質	硬度	材質	硬度
C7	轉造級	S55C	高週波淬火 (HRC60)	SCM415H	滲炭淬火 (HRC60)
C5	研磨級				



High Lead Nut Diagram



Lead accuracy (JIS B 1192) Unit : mm

Accuracy level	C7	C10
Cumulative lead time error	±0.05/300	±0.21/300

Tolerance of the accumulated lead error ($\pm E_c$) and variation (e) of the base lead for an arbitrary 300mm effective thread

Axial standard clearance Unit : mm

Shaft diameter	Axial clearance(max)
14~28	0.10
30~32	0.14
36~45	0.17
50	0.20

How to order

① TYPE E - 1616 - 300 - C7 - ② precision

...Full screw thread unmachined
Shaft end machining(with drawing)

Select guide rod accuracy
 C5 (for grinding grade screw) C5

Select axial clearance
 Standard clearance..... ZF
 0 preload..... Z0
 Light preload...(Only used in C5 class) Z1

Big Navigation

No.	d Guide	Guide	L Designation 1mm	A	B	C	D	G	S	P.C.D	X	Ball Diameter	Basic load (kgf)	
													Ca(Move) kN	Ca(Quiet) kN
1616	16	16	160 ~ 1200	53	10	48	32	10.5	38	42	4.5	3.175	1512	1995
2020	20	20	200 ~ 1500	62		55	39	10.8	46	50	5.5		1659	2464
2520	25	20	250 ~ 1500	74	12	65	47	11	49	60	6.6	3.5	2106	3422
2525		25				67		11.2				56	3.969	2481
3232	32	32	300 ~ 2000	92	15	82	58	14	68	74	9	4.762	3585	6071
4040	40	40	400 ~ 2000	114	17	100	73	17	84	93	11	6.35	5778	11753
5050	50	50	500 ~ 3000	135	20	125	90	21.5	92	112	14	7.938	8819	19241

Extra-large guide range

No.	d Guide	Guide	L Designation 1mm	A	B	C	D	E	S	P.C.D	X	Ball Diameter	Basic load (kgf)	
													Ca(Move) kN	Ca(Quiet) kN
1632	16	32	120 ~ 1200	53	10	43	32	10	34	42	4.5	2.778	734	988
2040	20	40	200 ~ 1500	62		48	39	13	41	50	5.5	3.175	970	1408
2550	25	50	250 ~ 1500	74	12	58	47	15	49	60	6.6	3.969	1450	2200