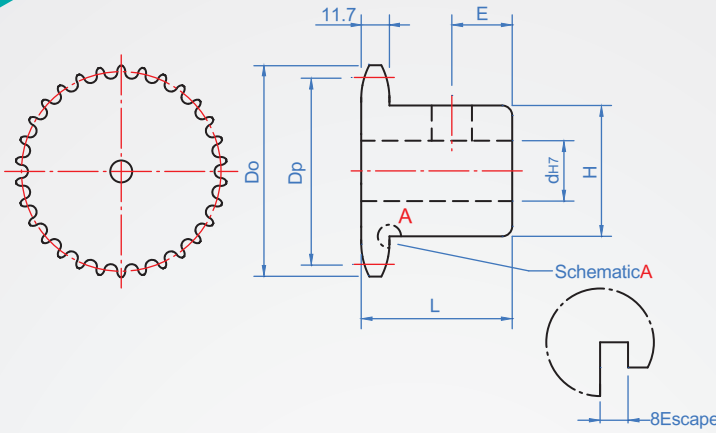


Pitch : 19.05 mm

## RS60B



Note : 8~11 teeth have the part marked with \*, and the wheel shell has the escape groove of processing 8.

Material	surface treatment
S45C (Tip high frequency)	-
	Black
	Electroless nickel

\* Attached to the socket set screws

### How to order

RS60B - 18 - N10 -

TYPE    Number of teeth    Hole type

Select surface treatment

No processing.....

dye Black.....  TB

Electroless nickel.....  TN

1		2						unit : mm					
Number of teeth	Dp	Do	Hole shap	dh7	H	L	E	Number of teeth	Weight (kg)				
8*	49.78	57	Keyway + Tapping	8 ~ 15	37	31.8	8	8	0.35				
9*	55.70	63		10 ~ 18	43			35	10	9	0.39		
10*	61.65	70		49	12 ~ 20					70	12	10	0.48
11*	67.62	76		55								11	0.58
12	73.60	83	NV Tapping 90°	54	70	40	12	12	0.67				
13	79.60	89		65				13	0.82				
14	85.61	95	N Tapping 120°	70	80	40	12	14	0.95				
15	91.62	101		90°				16 ~ 25	80	40	12	15	1.13
16	97.65	107	120°	18 ~ 30	80	40	12					16	1.3
17	103.67	113						Chain slot New JIS_B_1301	20 ~ 50	85	45	15	17
18	109.71	119	Axis aperture	kw(Js9)	kh	Tapping	18						2
19	115.74	126	8 ~ 10	3	1.4	M4	19	2.08					
20	121.78	132	11 ~ 12	4	1.8	M5	20	2.19					
21	127.82	138	13 ~ 17	5	2.3	M6	21	2.29					
22	133.86	144	18 ~ 22	6	2.8	M6	22	2.41					
23	139.90	150	23 ~ 30	8	3.3	M8	23	2.53					
24	145.95	156	31 ~ 38	10	3.3	M8	24	2.65					
25	151.99	162	39 ~ 44	12	3.3	M10	25	2.78					
26	158.04	168	45 ~ 50	14	3.8	M10	26	2.91					
27	164.09	174	51 ~ 58	16	4.3	M10	27	3.02					
28	170.14	180	59 ~ 65	18	4.4	M12	28	3.16					
29	176.20	187					29	3.2					
30	182.25	193					30	3.47					
31	188.30	199					31	3.55					
32	194.35	205					32	3.79					
33	200.41	211					33	3.85					
34	206.46	217					34	4.14					
35	212.52	223					35	4.32					
36	218.57	229					36	4.51					
37	224.63	235					37	4.6					
38	230.69	241					38	4.9					
39	236.74	247					39	4.95					
40	242.80	253					40	5.31					
41	248.36	260					41	5.5					
42	254.92	266					42	6.28					
45	273.09	284					45	6.96					
48	291.27	302					48	7.7					
50	303.39	314					50	8.22					

Copyright © CHENA INDUSTRIAL CO.,LTD ALL RIGHTS RESERVED.