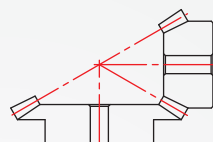
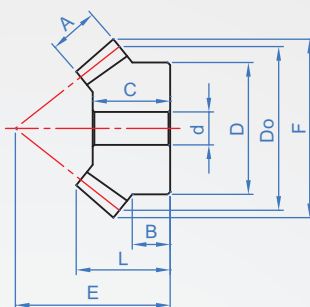
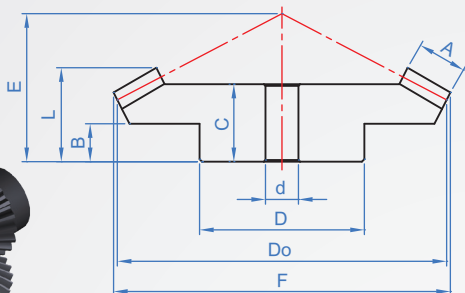


Pressure angle 20°
BG322
 Tooth ratio 1:2



Gear ratio 1:2

Material	Finish
S45C	-
	Dye black
	Electroless nickel

How to order

BG322 - M1 - 20 - N8 - TB
Modulus Number of teeth Hole shape Shaft diameter

Select surface treatment
 S45C..... T
 S45C+Dye black..... TB
 S45C+Electroless nickel..... TN

D path change can be specified
 Example: original D path 16, change 14

unit : mm														
1	2	3	Minimum aperture d	Gear ratio	A	B	C	D	Do	Number of teeth	E	F	L	
M1	15		6~	1530	6	11	17	12.5	15	15	27.35	16.79	18	
	30		8~			11.5	15	28	30	21.24	30.89	17		
	18		6~			9	15	15.5	18	28.32	19.79	16		
	36		8~			8	12	33	36	19.69	36.89	14		
	20		6~			9	15	16	20	30.31	21.79	16		
M1.5	15		8~	1530	10	11	20.5	18	22.5	15	35.15	25.18	22	
	30		10~			12	19	36	45	27.97	46.34	17		
	18		8~			11	22.5	23	27	39.86	29.68	24		
	36		10~			13	21	40	54	31.33	55.34	16		
	20		12~			14	25	25	30	45.84	32.68	27		
M2	15		10~	1530	12	14	22	40	60	40	33.77	61.34	25	
	30		10~			12	23	25	30	15	43.69	33.58	25	
	18		12~			18	32	30	36	18	56.02	39.58	34	
	36		13			25	60	72	36	38.17	73.79	28		
	20		18			32	35	40	20	59.99	43.58	34		
M2.5	15		15~	2040	15	26	62	80	80	40	42.1	81.79	30	
	30		12~			14	28	31	37.5	15	54.36	41.97	31	
	18		15~			25	55	75	30	40.61	77.24	30		
	36		12~			17	33	38.5	37.5	18	64.18	49.47	36	
	20		16~			16	27	75	75	36	45.01	92.24	32	
M3	15		12~	1530	18	23	41	40	45	20	76.27	54.47	44	
	30		15~			16.5	28	90	90	40	48.03	102.24	33	
	18		12~			14	28	31	37.5	15	54.36	41.97	31	
	36		15~			25	55	75	30	40.61	77.24	30		
	20		16~			17	33	38.5	37.5	18	64.18	49.47	36	
M4	15		12~	2040	19	16.5	28	90	90	40	48.03	102.24	33	
	30		12~			17	33	38.5	37.5	18	64.18	49.47	36	
	18		16~			16	27	75	75	36	45.01	92.24	32	
	36		12~			23	41	40	45	20	76.27	54.47	44	
	20		15~			23	41	40	45	20	76.27	54.47	44	
M5	15		16~	1530	25	22	45	46	54	18	78.85	59.37	48	
	30		16~			18	35	70	114	38	54.25	110.68	40	
	18		20~			16	27	75	75	36	45.01	92.24	32	
	36		16~			26	47	50	80	20	89.42	65.37	50	
	20		20~			17	35	80	160	40	58.36	122.68	40	
M5	15		16~	2040	22	23	46	50	60	15	86.52	67.16	50	
	30		16~			22	42	80	120	30	64.58	123.58	48	
	18		20~			25	51	62	72	18	100.79	79.16	55	
	36		20~			22	41	95	144	36	68.14	147.58	48	
	20		20~			23	51	62	100	20	108.73	87.16	55	
M5	15		20~	1530	28	24	45	95	200	40	80.02	163.58	55	
	30		20~			23	51	62	100	20	108.73	87.16	55	
	18		25~			32	60	62	75	15	111.73	83.94	65	
	36		25~			22	45	120	150	30	75.21	154.47	54	
	20		25~			36	65	77	90	18	130.6	98.94	69	
M5	15		20~	1836	30	22	46	100	180	36	84.44	184.47	56	
	30		20~			34	64	80	100	20	104.53	108.94	69	
	18		20~			23	47	100	200	40	90.31	204.47	57	
	36		20~			23	47	100	200	40	90.31	204.47	57	
	20		20~			23	47	100	200	40	90.31	204.47	57	

※Please note: It is not allowed to purchase in one piece. Because the combination angle with other companies may cause the teeth to be unable to bite, it must be ordered in sets.