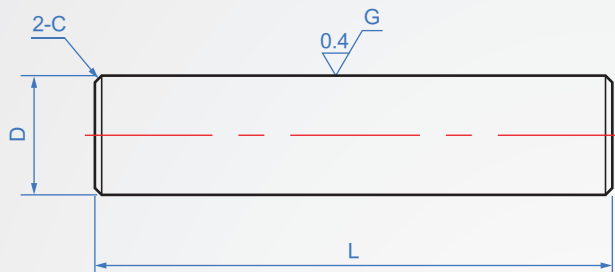


Shafts
JZ241
Straight



D tol.	Material	Hardness	Surface treatment
g6	JH SUJ2	High frequency quenching HRC58~	Hard chrome plating Hard membrane HV800~ Film thickness 10um ± 10%
	CH S45C		
f8	C S45C	-	
	S SUS304		

Application reference:
g6 tolerance: Linear bushing, axis for sliding table
f8 tolerance: recommended when installing bearings and pillars

L	Tol.
5 ~ 50	±0.2
51 ~ 150	±0.3
151 ~ 400	±0.5
401 ~ 1000	±0.8
1001 ~ 2000	±1.2

How to order

JZ241 - JH - 10 - 580
 TYPE Material D L

Material	D	g6 tol.	f8 tol.	L	Weight kg/m	Material length Max. L	High frequency Effective hardened layer depth	C max.
JH (SUJ2+high frequency)	3	-0.002 -0.008	-	5~400	0.06	2500	0.5mm以上	0.2
	4	-0.004 -0.012			0.1			
	5			10~500	0.16			
JH (SUJ2+high frequency)	6	-0.005 -0.014	-0.010 -0.028	15~1000	0.23	3000	1.0mm以上	0.5
	8		-0.013 -0.035		0.4			
	10		0.62					
CH (S45C+high frequency)	12	-0.006 -0.017	-0.016 -0.043	20~1200	0.89	4000	1.5mm以上	1.0
	13				1.05			
C (S45C)	16	-0.007 -0.020	-0.020 -0.053	50~2000	1.58			
	20				2.47			
	25				3.85			
	30				5.55			

① The hard chromium plating layer is only formed on the axis of the base material, and will naturally disappear after processing, and there will be no secondary plating treatment.

Alterations	Code	Spec.
	LC	Change length Designated units = 1mm
	LA	Change L dimension tolerance L ≤ 500 □ L ± 0.05 L > 500 □ L ± 0.1 Designated units = 0.1mm

Example : JZ241-3-LC(LA)-48

Alterations	Code	Spec.
	MA	Alteration wrench groove MA=Designated units 1mm D = 3~5 Not applicable

D	W	k
6	5	8
8	7	
10	8	
12	10	
13	11	10
15	13	
16	14	
18	16	
20	17	
25	22	15
30	27	
35	30	
40	36	
50	41	
		20

Example : JZ241-10-100-MA30