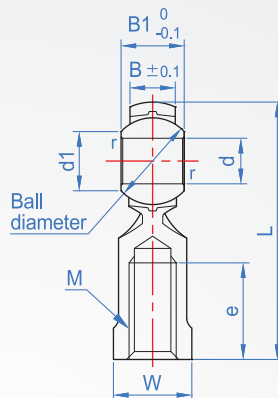
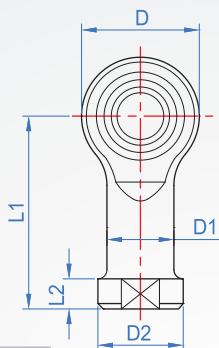


Knuckle bearing  
**RN541**  
Female thread



Main part	Bushing	Spherical inner ring
S35C Trivalent chromium	Copper alloy	SUJ2 hard chrome plating
SUS304C	Teflon PTFE	HRC58~ SUS440C

How to order

↓

RN541 - 5 - [ ] - [ ]

TYPE d

Select the thread direction

Right thread..... [ R ]

Left thread..... [ L ]

Select material

S35C+Copper alloy..... [ CU ]

S35C+Teflon..... [ CF ]

SUS304C+Teflon..... [ SUS ]

Clearance	Trivalent chromium	Hard chrome plating
Radial clearance	0.035 and below	0.035 and below
Axial clearance	0.1 and below	0.05 and below

Unit : mm

d H7	M x Pitch	External dimensions		Clamper dimensions						Spherical inner ring dimensions			Static load Cs (N)	Weight (g)	* Allowable tilt angle				
		L	D	B1	W	D1	D2	B	L1	L2	e	Ball diameter mm			d1	r	α1	α2	α3
5	M5 x 0.8	35	16	8	9	9	11	6	27	4	14	11.112	7.7	0.3	5590	18	8°	14°	25°
6	M6 x 1.0	39	18	9	11	10	13	6.75	30	5		12.7	9		6860	26			
8	M8 x 1.25	47	22	12	14	12.5	16	9	36	5	17	15.875	10.4	0.5	9800	45	9°	15°	23°
A8	M8 x 1.0																		
10	M10 x 1.5	56	26	14	17	15	19	10.5	43	6.5	21	19.05	12.9	0.7	13200	76	10°	16°	24°
A10	M10 x 1.25																		
12	M12 x 1.75	65	30	16	19	17.5	22	12	50	8	24	22.225	15.4	0.7	16700	114	10°	16°	24°
A12	M12 x 1.25																		
14	M14 x 2.0	74	34	19	22	20	25	13.5	57	8	27	25.4	16.9	0.7	20600	158	10°	16°	24°
A14	M14 x 1.5																		
16	M16 x 2.0	83	38	21	22	22	27	15	64	8	33	28.575	19.4	0.7	25000	200	9°	15°	23°
A16	M16 x 1.5																		
18	M18 x 1.5	92	42	23	27	25	31	16.5	71	10	36	31.75	21.9	0.7	29400	288	10°	15°	23°
20	M20 x 1.5																		
22	M22 x 1.5	100	46	25	30	27.5	34	18	77	10	40	34.925	24.4	0.7	34300	372	10°	15°	23°
22	M22 x 1.5	109	50	28	32	30	37	20	84	12	43	38.1	25.9	0.7	41200	475	10°	15°	23°

Copyright © CHENA INDUSTRIAL CO., LTD ALL Rights Reserved.