

Square steel sheet

GF411

Clamping



How to order

GF411 - 26 - 5-5

TYPE D d1xd2

Select the body material

AL-High strength aluminum alloy... Blank

SUS..... SUS

Ontology

High strength
aluminum alloy
(White anode)

SUS

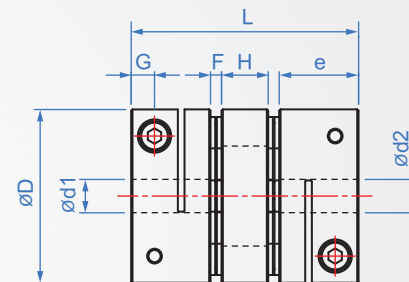
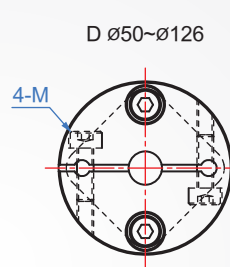
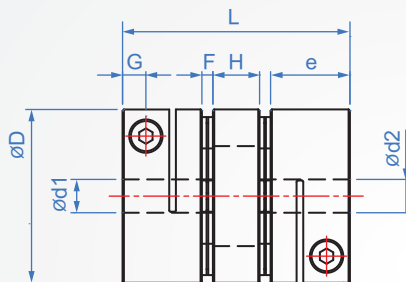
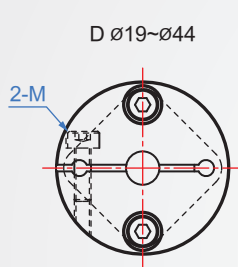
Disc.Pin

stainless steel

Hexagon socket
head cap screws

SCM435
(Dye black)

SUS



D	Inner hole designation d1-d2		L	e	F	M	G	H	Max. torque (N · m)		Allowable axial displacement (mm)		Max. revolutions (rpm/min)		Static torsion spring coefficient (N·m/rad)		Moment of inertia (kg · m ²)		weight g		
	min.	max.							AL	SUS	AL	SUS	AL	SUS	AL	SUS	AL	SUS	AL	SUS	
	unit : mm																				
19	3	~ 8	27	9.1	1.8	M2.5	3.3	5.2	1	1.8	±0.18	±0.07	10000	5000	700	790	9.1x10 ⁻⁷	1.6x10 ⁻⁶	14.6	62	
26	5	~ 14	35	11.35	2.6	M3	3.9	7.1	1.5	2.2	±0.30	±0.07			1850	2050	3.0x10 ⁻⁶	4.5x10 ⁻⁵	37	95	
32	5	~ 15	41	12.25	3.5		3.85	9.5	2	3	±0.36	±0.09			2850	2900	7.6x10 ⁻⁶	1.25x10 ⁻⁵	67	135	
34	5	~ 16	45	14.25		4.85	9.5	3	4.5	9000					10000	3.0x10 ⁻⁵	4.5x10 ⁻⁵	118	295		
39	8	~ 19	50	14.9	4.5	M4	5	11.2	6	9	±0.45	±0.11			9000	10000	3.0x10 ⁻⁵	4.5x10 ⁻⁵	118	295	
44	8	~ 22	50	14.9	4.5	M4	5	11.2	9	13	±0.54	±0.13		10000	11200	3.8x10 ⁻⁵	5.7x10 ⁻⁵	144	360		
56	10	~ 32	64	19.75	5.5	M5	6.4	13.5	25	37	±0.72	±0.18		9000	4500	25000	28000	1.6x10 ⁻⁴	2.1x10 ⁻⁴	318	795
68	12	~ 38	75	23.35	6.3	M6	7.7	15.7	60	90	±0.80	±0.20				35000	39000	2.0x10 ⁻⁴	2.4x10 ⁻⁴	492	1230
82	17	~ 42	98	30	8	M8	9.7	22	80	150	±0.80	±0.25		8000	4000	70000	75000	2.5x10 ⁻⁴	3 x10 ⁻⁴	1013	2532
94	19	~ 45				M10	10		165	245		±0.35				50000	55000	1.76x10 ⁻³	2.5x10 ⁻³	1502	2750
104	20	~ 48				10	235		340	±1.30		±0.60	60000			65000	1.86x10 ⁻³	2.8x10 ⁻³	1650	3050	
126	20	~ 55	110	33	12	M12	12	20	350	450	±0.75	±0.75	67500	75600	3.95x10 ⁻³	5.2x10 ⁻³	1980	3850			

Allowable declination : 1.5°

Che Na

FAX 886-2688-3177

info@chena.com.tw

886-22688-3188
886-2688-3881~3No.21, Guangrong St. Shulin Dist.,
New Taipei City 238 Taiwan (R.O.C.)