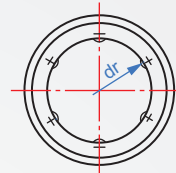
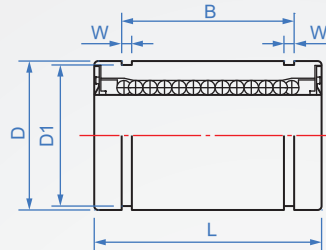


Main part	Steel ball	Holder	Operating temperature	Accessory
SUJ2 HRC58~	SUJ2	Resin	-20~80°C	2-sides dust cover

LM233

General



How to order

LM233 - 3
TYPE d

Unit : mm

dr	Tolerance value	Main size & accuracy								Number of ball columns	Eccentric max.	Rated load(kgf)		Weight (g)	
		D	Tolerance value	D1	L	Tolerance value	B	Tolerance value	W			C(N)	Co(N)		
3	+0 -0.008	7	+0 -0.009	—	10	+0 -0.12	—	—	1.1	4	0.008	69	105	1.4	
4		8		9.6	12		10.2					88	127	2	
5		10		11.5	15		13.5					167	206	4	
6	+0 -0.009	12	+0 -0.011	14.3	17	11.5	+0 -0.2	1.3				0.012	200	260	8
8S		15		14.3	24	17.5							170	220	12
8		15		18	29	22							260	400	16
10		19		20	30	23			370	540	30				
12		21		22	32	23			410	590	31.5				
13	+0 -0.013	23	+0 -0.016	27	37	23	+0 -0.3	1.6	0.015	500	770	43			
16		28		30.5	42	26.5				770	1170	69			
20		32		38	59	30.5				860	1370	87			
25	+0 -0.01	40	+0 -0.016	41	64	41	+0 -0.3	1.85	0.015	980	1560	220			
30		45		43	64	44.5				1560	2740	250			

※Suggest using g6 tolerance guides.

1N≒0.12kgf