

Stand type

## RN509

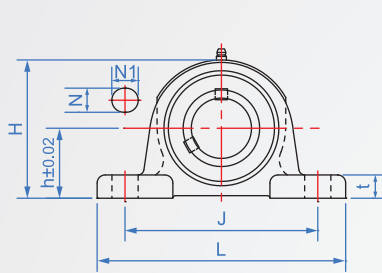
Cast iron



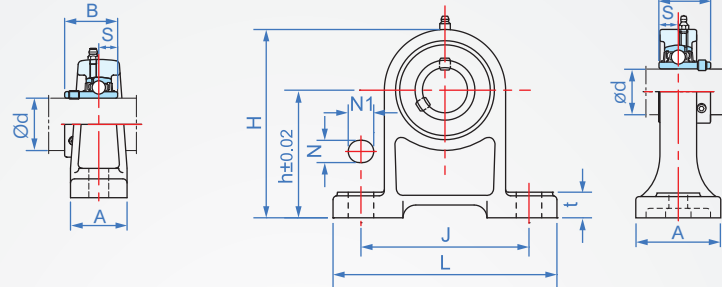
Mold	Main part	Bearing	Set screw	Grease nipple	Operating temperature
Stand	Cast iron	SUJ2	SCM435	Cu	-10°C~ 80°C
High stand					

Bearing NBR rubber seal

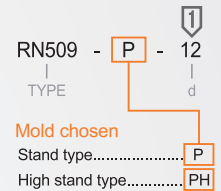
P : Stand



PH : High stand



### How to order



d	L	J	t	B	S	Stand type						High stand type			Basic rated load (kN)		Quality (g)	
						H	h	A	H	h	A	N	N1	Cr	Cor	Stand type	High stand type	
12	127	95	15	31	12.7	62	30.2	38	101	70	40	13	19	12.8	6.6	650	1000	
15	127	95	15	31	12.7	62	30.2	38	101	70	40	13	19	12.8	6.6	630	990	
17	127	95	15	31	12.7	62	30.2	38	101	70	40	13	19	12.8	6.6	620	980	
20	127	95	15	31	12.7	65	33.3	38	101	70	40	13	19	12.8	6.6	650	960	
25	140	105	16	34.1	14.3	70	36.5	38	114	114	50	13	16	14	7.9	790	1200	
30	165	121	18	38.1	15.9	83	42.9	48	130	130	50	17	21	19.6	11.3	1300	1900	
35	167	127	19	42.9	17.5	94	47.6	48	140	140	60	17	21	25.9	15.4	1600	2400	
40	184	137	19	49.2	19	100	49.2	54	149	149	70	17	25	29.3	17.9	2000	2800	
45	190	146	20	49.2	19	108	54	54	157	157	70	17	22	33	20.5	2300	3200	
50	206	159	22	51.6	19	114	57.2	60	165	165	70	20	15	35.5	23.2	2700	3600	

1kgf = 9.8N