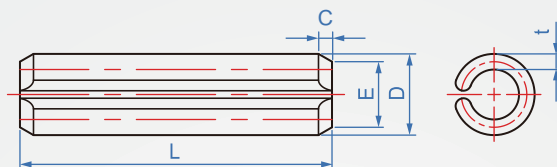
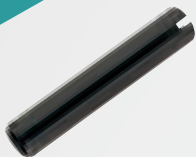


British spring pin
SP706
SPP



Material	hardness	surface treatment
carbon steel	HRC	dye black
SUS420	45~50	-

How to order

SP706 - 1/16 - 3/16 -

TYPE D L

Select material
carbon steel.....
SUS420..... **SUS**

¹ ² D	1/16" (0.062)	5/64" (0.078)	3/32" (0.094)	1/8" (0.125)	5/32" (0.156)	3/16" (0.187)	7/32" (0.219)	1/4" (0.25)	5/16" (0.312)	3/8" (0.375)	7/16" (0.437)	1/2" (0.5)
L												
3/16"	●	●										
1/4"	●	●	●									
5/16"	●	●	●									
3/8"	●	●	●	●								
7/16"	●	●	●	●	●							
1/2"	●	●	●	●	●	●						
9/16"	●	●	●	●	●	●	●					
5/8"	●	●	●	●	●	●	●	●				
11/16"	●	●	●	●	●	●	●	●	●			
3/4"	●	●	●	●	●	●	●	●	●	●		
13/16"	●	●	●	●	●	●	●	●	●	●	●	
7/8"	●	●	●	●	●	●	●	●	●	●	●	●
15/16"	●	●	●	●	●	●	●	●	●	●	●	●
1"	●	●	●	●	●	●	●	●	●	●	●	●
1-1/8"		●	●	●	●	●	●	●	●	●	●	●
1-1/4"		●	●	●	●	●	●	●	●	●	●	●
1-3/8"		●	●	●	●	●	●	●	●	●	●	●
1-1/2"		●	●	●	●	●	●	●	●	●	●	●
1-5/8"			●	●	●	●	●	●	●	●	●	●
1-3/4"			●	●	●	●	●	●	●	●	●	●
1-7/8"			●	●	●	●	●	●	●	●	●	●
2"				●	●	●	●	●	●	●	●	●
2-1/4"					●	●	●	●	●	●	●	●
2-1/2"					●	●	●	●	●	●	●	●
2-3/4"						●	●	●	●	●	●	●
3"							●	●	●	●	●	●
3-1/4"								●	●	●	●	●
3-1/2"									●	●	●	●
3-3/4"										●	●	●
4"											●	●

inches	D		E	C	t	Electric I.D.		Double shear strength Lbs
	max	Min				max	Min	
1/16" (0.062)	0.069	0.066	0.059	0.011	0.012	0.065	0.062	425
5/64" (0.078)	0.086	0.083	0.075	0.014	0.018	0.081	0.078	650
3/32" (0.094)	0.103	0.099	0.091	0.018	0.022	0.097	0.094	1.0
1/8" (0.125)	0.135	0.131	0.122	0.024	0.028	0.129	0.125	2.1
5/32" (0.156)	0.167	0.162	0.121	0.028	0.032	0.16	0.156	3.0
3/16" (0.187)	0.199	0.194	0.182	0.036	0.042	0.192	0.187	4.4
7/32" (0.219)	0.232	0.226	0.214	0.042	0.048	0.224	0.219	5.7
1/4" (0.25)	0.264	0.258	0.245	0.042	0.048	0.256	0.25	7.7
5/16" (0.312)	0.328	0.321	0.306	0.06	0.062	0.318	0.312	11.5
3/8" (0.375)	0.392	0.385	0.368	0.06	0.077	0.382	0.375	17.6
7/16" (0.437)	0.456	0.448	0.43	0.06	0.077	0.445	0.437	20.0
1/2" (0.5)	0.521	0.513	0.485	0.06	0.094	0.51	0.5	25.8

Copyright © CHENA INDUSTRIAL CO., LTD ALL RIGHTS RESERVED.