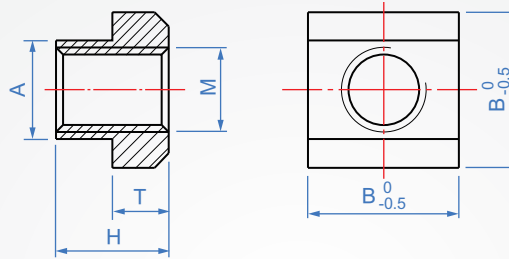
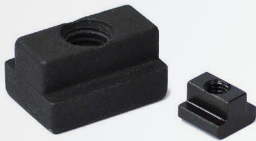


For T shape groove

**TN760**

Nut



Material	Finish	Level
Steel + heat treatment	Dye black	10.9
SUS303	-	-

How to order

1 2  
 TN760 - 5 - M4 -   
TYPE T-slot M

Select material

Steel + heat treatment..   
 SUS 303.....  SUS

1

2

unit : mm

T-slot	M (Coarse teeth)				A	B	H	T
	Steel		Stainless steel					
5	M4			-	4.6	9	6.5	3
6	M5			-	5.6	10	8	4
8	M6			M6	7.6	13	10	6
10	M6	M8		M8	9.6	15	12	6
12	M8	M10		M10	11.6	18	14	7
14	M10	M12		M12	13.6	22	16	8
16	M10	M12	M14	M14	15.6	25	18	9
18	M12	M14	M16	M16	17.6	28	20	10
20	M12	M16	M18	-	19.6	32	24	12
22	M16	M20		-	21.6	35	28	14
24	M20	M22		-	23.5	40	32	16
28	M20	M24		-	27.6	44	36	18

■ Reference value of the screw  
 through the nut (\* Not DIN standard)

M	Mini. load N x 10 <sup>3</sup>
5	7
6	11.4
8	16
10	29
12	46
14	67
16	*
18	128
20	*
22	196
24	*
28	282