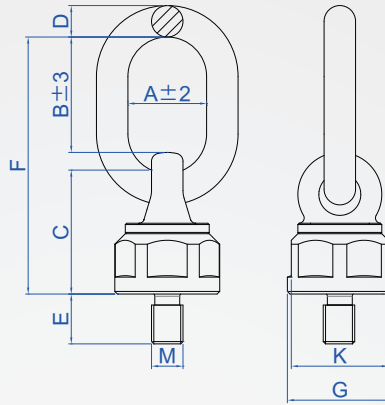


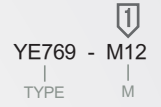
Rings - Imperial
YE769

Universal rotation



| Part | Material |
|-------|--------------------|
| Rings | Forged alloy steel |
| Bolt | Alloy steel |

How to order



| limit load Tons | Metric Coarse Teeth | | American Coarse Teeth | | * E | D | B | A | G | K | C | F | Tightening torque N · m | quality (kg) | | | | | | | | | | | | |
|--------------------|------------------------|------|--------------------------|-----|------|----|-----|----|----|------|-------|-------|-------------------------------|-----------------|------|-----|----|------|-------|-------|--------|----|----|-------|-------|-----|
| | Pitch | UNC | UNC | UNC | | | | | | | | | | | | | | | | | | | | | | |
| 0.4 | M8 | 1.25 | 5/16" | 18 | 12 | | | | | | | | 10-40 | 0.5 | | | | | | | | | | | | |
| 0.6 | M10 | 1.5 | 3/8" | 16 | 19 | 12 | 44 | 30 | 40 | 37 | 46 | 98 | 15-40 | | | | | | | | | | | | | |
| 0.7 | M12 | 1.75 | 1/2" | 13 | | | | | | | | | 30-100 | | | | | | | | | | | | | |
| 1.25 | M14 | 2 | — | — | 31.8 | | | | | | | | 16 | | 54.5 | 34 | 59 | 54.5 | 64.5 | 132.5 | 45-130 | | | | | |
| 1.5 | M16 | | 5/8" | 11 | | | | | | | | | | 100-170 | | | | | | | | | | | | |
| 1.9 | M18 | 2.5 | 3/4" | 10 | 30 | 20 | 67 | 40 | 70 | 64.3 | 76 | 160 | | 190-280 | | | | | | | | | | | | |
| 2 | M20 | | 7/8" | 9 | | | | | | | | | | 38.1 | | | | | | | 22 | 95 | 51 | 79 | 74 | 91 |
| | M22 | | — | — | | | | | | | | | 50 | | 26 | 108 | 65 | 93 | 85 | 100.5 | | | | | | |
| 3.15 | M24-A | 3 | 1"-A | 8 | 63 | | | | | | | | | 95 | | | | | | | | | | | | |
| 4 | M24-B | 3 | 1"-B | 8 | | 68 | 108 | 65 | 93 | 85 | 100.5 | 230.5 | 5.9 | | | | | | | | | | | | | |
| | M27 | — | — | 68 | | | | | | | | | 108 | | | | | | | | 65 | 93 | 85 | 100.5 | 230.5 | 6 |
| 5 | M30 | 3.5 | — | | — | 68 | | | | | | | | | 108 | 65 | 93 | 85 | 100.5 | 230.5 | | | | | | 6.3 |
| 6 | — | — | 1-1/4" | 7 | 68 | | | | | | | | | 108 | | | | | | | | | | | | 65 |
| 7.5 | M33 | 3.5 | — | — | | 68 | 108 | 65 | 93 | 85 | 100.5 | 230.5 | | | | | | | | | | | | | | |
| 10 | M36 | 4 | 1-1/2" | 6 | 68 | | | | | | | | 108 | | | | | | | | 65 | 93 | 85 | 100.5 | 230.5 | |
| | M39 | 4 | — | — | | 68 | | | | | | | | | 108 | 65 | 93 | 85 | 100.5 | 230.5 | | | | | | |
| 13 | M42 | 4.5 | — | — | 68 | | | | | | | | | 108 | | | | | | | | | | | | 65 |
| | M45 | 4.5 | 1-3/4" | 5 | | 68 | 108 | 65 | 93 | 85 | 100.5 | 230.5 | | | | | | | | | | | | | | |
| 14 | M48 | 5 | 2" | 4.5 | 68 | | | | | | | | 108 | | | | | | | | 65 | 93 | 85 | 100.5 | 230.5 | |

* E size thread length, can be customized.

※ Notice

- . Built-in ball structure, uniform force, smooth rotation. When the direction of the force changes, the ring rotates with the direction of the force, and the ring does not generate torque.
- . Load that can be lifted in different force directions is different, but the safety factor is guaranteed to be 4 times.
- . The thread specifications are complete, and the rated load range is wide. The thread size can be customized according to customer requirements.
- . 100% Qualified by 6g Go and Stop Gauge, suitable for precision threaded holes.
- . Outer hexagonal design of the lifting ring base can easily install the lifting point on the suspended object.
- . The thread is made of alloy steel 42CrMo by precision forging, the tensile strength σ_b before heat treatment is 1080MPa, and the mechanical properties are improved after quenching and tempering. The rotating base is designed in one piece, forged as a whole, and the strength is higher.

■ Lifting ring load chart

| hanging icon | | | | | | | | | | | hanging icon |
|--------------|-----------------|-----|------|-----|--------|---------|--------------|--------|---------|--------------|--------------|
| load angle | 1 | 2 | 1 | 2 | 2 | 2 | 2 | 3~4 | 3~4 | 3~4 | load angle |
| thread | 0° | 0° | 90° | 90° | 0°~45° | 45°~60° | asymmetrical | 0°~45° | 45°~60° | asymmetrical | thread |
| M | load limit Tons | | | | | | | | | | INCH |
| M8 | 0.6 | 1.2 | 0.4 | 0.8 | 0.6 | 0.4 | 0.4 | 0.8 | 0.6 | 0.4 | 5/16" |
| M10 | 0.9 | 1.8 | 0.6 | 1.2 | 0.8 | 0.6 | 0.6 | 1.3 | 0.9 | 0.6 | 3/8" |
| M12 | 1.2 | 2.4 | 0.7 | 1.4 | 1 | 0.7 | 0.7 | 1.5 | 1.1 | 0.7 | 1/2" |
| M14 | 2 | 4 | 1.25 | 2.5 | 1.8 | 1.3 | 1.3 | 2.6 | 1.9 | 1.3 | — |
| M16 | 2.6 | 5.2 | 1.5 | 3 | 2.1 | 1.5 | 1.5 | 3.2 | 2.3 | 1.5 | 5/8" |
| M18 | 3 | 6 | 1.9 | 3.8 | 2.7 | 1.9 | 1.9 | 4 | 2.9 | 1.9 | 3/4" |
| M20 | 3.5 | 7 | 2 | 4 | 2.8 | 2 | 2 | 4.2 | 3 | 2 | 7/8" |
| M22 | 3.5 | 7 | 2 | 4 | 2.8 | 2 | 2 | 4.2 | 3 | 2 | — |
| M24-A | 5 | 10 | 3.15 | 6.3 | 4.4 | 3.2 | 3.2 | 6.6 | 4.7 | 3.2 | 1" |
| M24-B | 7 | 14 | 4 | 8 | 5.6 | 4 | 4 | 8.4 | 6 | 4 | 1" |
| M27 | 7 | 14 | 4 | 8 | 5.6 | 4 | 4 | 8.4 | 6 | 4 | — |
| M30 | 7 | 14 | 5 | 10 | 7 | 5 | 5 | 10.5 | 7.5 | 5 | — |
| — | 10 | 20 | 6 | 12 | 8.4 | 6 | 6 | 12.6 | 9 | 6 | 1-1/4" |
| M33 | 15 | 30 | 7.5 | 15 | 10.5 | 7.5 | 7.5 | 15.8 | 11.3 | 7.5 | — |
| M36 | 15 | 30 | 10 | 20 | 14 | 10 | 10 | 21 | 15 | 10 | 1-1/2" |
| M39 | 15 | 30 | 10 | 20 | 14 | 10 | 10 | 21 | 15 | 10 | — |
| M42 | 17 | 34 | 13 | 26 | 18.2 | 13 | 13 | 27.3 | 19.5 | 13 | — |
| M45 | 17 | 34 | 13 | 26 | 18.2 | 13 | 13 | 27.3 | 19.5 | 13 | 1-3/4" |
| M48 | 18 | 36 | 14 | 28 | 19.6 | 14 | 14 | 29.4 | 21 | 14 | 2" |

Copyright © CHENA INDUSTRIAL CO., LTD ALL RIGHTS RESERVED.