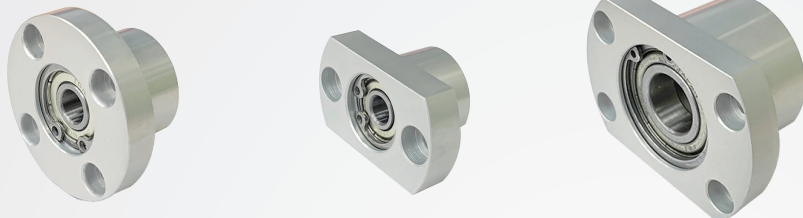


Double bearing BH558 With buckle

Appearance	Material	Finish	Bearing
F Round	Iron S45C	TN Electroless nickel	SUJ2 (JIS 0)
	Aluminum A6061	AS Clear anodizing	
H Two plane shape	Iron S45C	TN Electroless nickel	
	Aluminum A6061	AS Clear anodizing	

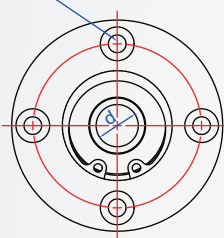
※Accessory C-type buckle (SUS304).



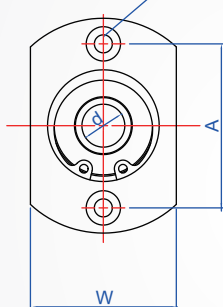
F : Round

H : Biplane

Y seat hole, depth Z
(4-X through hole)

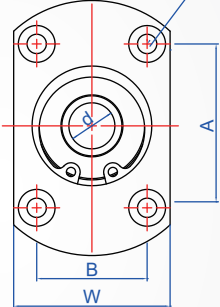


Y seat hole, depth Z
(2-X through hole)

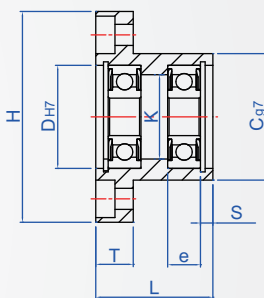


d 6~15

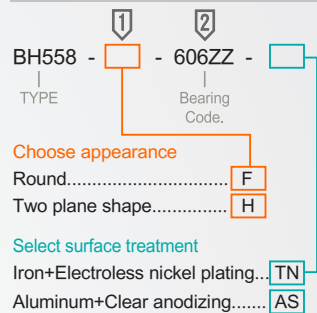
Y seat hole, depth Z
(4-X through hole)



d 20~30



How to order



2

unit:mm

Bearing Code	d	DH7	Tolerance	L	T	H	e	s	W	P.C.D	C g7	Tolerance	K	A	B	X	Y	Z
606ZZ	6	17	+0.018 0	20		39	6		23	29	21	-0.007 -0.028	13	29				
608ZZ	8	22			8	45	7	2.7	29	35	27		18	35		4.5	8	4.1
6000ZZ	10	26	+0.021 0	25		50	8	2.9	34	40	32	-0.009 -0.034	22	40	-			
6001ZZ	12	28				52			36	42	34		24	42				
6002ZZ	15	32		30	10	60	9	2.9	40	48	38	-0.009 -0.034	28	48		5.5	9.5	5.1
6004ZZ	20	42	+0.025 0		11	77			54	64	50		36	56	32	6.5	11	6.1
6005ZZ	25	47		40	13	88		4	58	72	54	-0.01 -0.04	41	63	36			
6006ZZ	30	55	+0.03 0			96	13	4.2	66	80	62		48	70	40	9	14	8.1

Copyright © CHENA INDUSTRIAL CO., LTD ALL RIGHTS RESERVED.