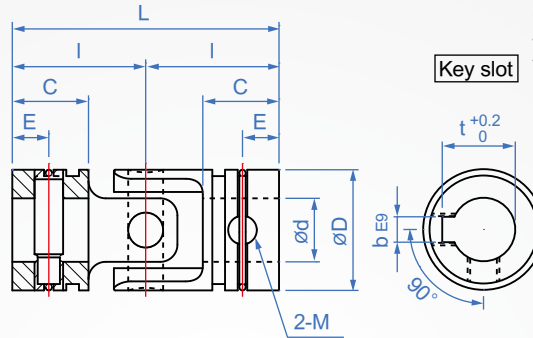
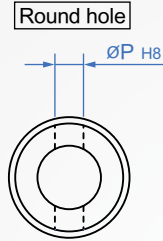


Universal Joint  
**SJ460**



Material	Finish
SCM415 Charcoal burning	Dye black (Appearance grinding)

Accessories for round holes : Fixed pin, elastic ring  
Accessories : Stop screw

**How to order**

SJ460 - 14 -

TYPE d

Select shaft hole type

Round hole..... A

Keyway..... B

Round hole + keyway.... C

Allowable angle of action : 30°

d	Shaft hole type	D	L	I	C	E	P	b	t	M	weight (g)	Allowable torque N•m	Allowable speed min-1	Destruction of torque N•m
3	A Bilateral round hole	6	26	13	9	2.5	1	-	-	-	5	-	4000	0.4
4		8	24	12	7	4	1.5	-	-	-	8	-	3300	2.6
5		10	30	15	9	5	2	-	-	-	12	-	2800	9.8
6		12	31	15.5	9	4.5	3	-	-	-	15	9.5	2500	16
8	A Bilateral round hole	15	36	18	10	5	3.5	3	9.5	M3	30	1.73	2200	35
10		19	42	21	12	6	4.5	4	11.5	M5	55	3.58	2000	83
12		23	52	26	15	7.5	5	-	13.5	-	110	5.3	1800	140
14		26	59	29.5	17	8.5	5.8	-	16	-	155	8.32	1600	200
16	B Bilateral keyway	30	74	37	22	11	6.5	5	18	M6	260	11.95	1400	310
18		33	81	40.5	23.5	11.75	7	-	20	-	345	15.58	1200	400
20		36	87	43.5	25	12.5	8	-	22	-	465	22.62	1000	530
22		40	94	47	27	13.5	9	-	25	-	630	31.5	900	760
25	C Round hole + keyway	44	105	52.5	30	15	10	7	28	M8	790	44.18	800	1000
30		51	122	61	35	17.5	11.5	-	33	-	1160	70.1	700	1500
35		59	140	70	40	20	13	-	38.5	-	2255	104.52	600	2400
40		67	157	78.5	45	22.5	14.5	-	43.5	M10	2730	148.62	500	3600
45		75	176	88	50	25	16	12	48.5	-	4350	203.58	400	4800
50		83	191.4	95.7	55	27.5	17.5	-	53.5	-	5200	270.6	300	5800
60		98	236	118	70	-	-	-	65	M12	6538	-	200	11387

※ The allowable torque value in the table is 1/3 of the breaking torque and 0° when the static load is 0° .