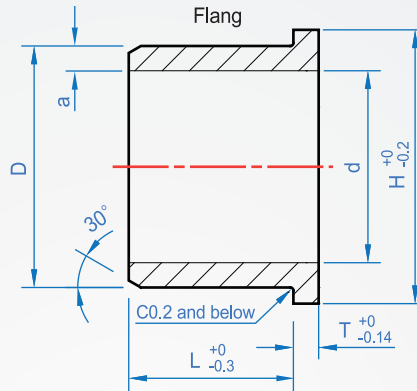
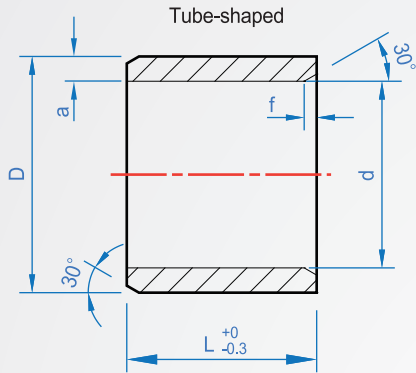
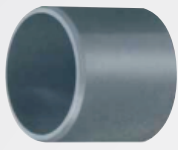
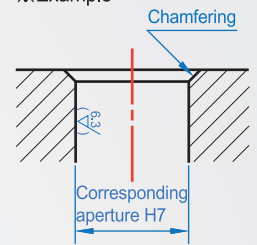


Thin
JZ255
Oilless



※Example :



Material	Operating temperature
POM with Oleoresin +Special fillers	-40°C~+80°C

※This product contains special fillers, do not use in pure water.

Low cost: Long life

With the development and application of new materials, Self-lubricating is the designers desired, high performance polymer non-oil bushings therefore be born. Base materials having a corrosion resistance, dust, high compressive strength and good heat dissipation, added fiber and filler material with solid grease on, these ingredients are not hierarchically arranged like traditional materials, but even fusion. This design increases strength and wear resistance in order to improve and reduce the coefficient of friction to ensure long life.

Self-lubricating

Solid grease, as a minor component in the reinforcing fibers embed, when the movement, release the grease out from the fiber can help reduce the friction coefficient.

Reinforcing fibers

Base materials mainly under radial pressure; The support shaft, ensure solid grease without high load. At the same time the base materials was added fibers and fillers to increase strength, to ensure the stability of the material.

After the start-up phase

In the initial stage, running between the shaft and bushings, and gradually form the best friction surface. Also reducing load, worn gradual decline, the friction coefficient is reduced; Until optimum friction surface is formed.

How to order

JZ255 - 3 - 5 -

TYPE d L

Type
Tube-shaped..... blank
Flange..... F

Characteristics distinguish	Unit
Proportion	1.47
Tensile strength(MPa)	60.8
Extension(%)	60
Hardness(HRM)	80
Coefficient of expansion(X10 /°C)	9~13
Friction coefficient(μ)	0.01~0.15
The max. allowable load(MPa)	20
The max. allowable speed(m/min)	60

d	L										D	a	H	T	Recommended correspondence size					
	Tube-shaped					Flange									Mounting holes H7		Shaft diameter g6			
	3	4	5	6	8	3	4	5	6	8					5	6	7	8	3	4
3	3	4	5			3					5	+0.210	1	-0.015 -0.070	8		5	+0.012 +0	3	+0 -0.010
4	4	5	6			4	6				6	+0.072	1	-0.023 -0.078	9		6		4	
5	5	6	8			4	5	7			7				10		7		5	+0 -0.012
6	5	6	8	10		5	6	8			8	+0.270 +0.095			12		8	+0.015 +0	6	
8	6	8	10	12	15	6	8	10			10				15		10		8	+0 -0.015
10	8	10	12	15		6	8	10	12	15	12				18	1	12		10	
12	10	12	15	20		6	8	10	12	15	14				20		14		12	
14	10	15	20			10	12	15	20		16	+0.340 +0.108			22		16	+0.018 +0	14	
15	10	15	20			10	12	15	20		17				23		17		15	+0 -0.018
16	15	20	25			10	15	20			18				24		18		16	
18	15	20	25			10	12	15	20		20				26		20		18	
20	10	15	20	25	30	10	15	20	25		23	+0.450 +0.121			31		23	+0.021 +0	20	
22	20	30				10	15	20	25		25				33	1.5	25		22	+0 -0.021
25	20	25	30			10	15	20	25	30	28				36		28	+0.025 +0	25	
30	20	30	40			20	30	40			34	+0.550 +0.131	2	-0.030 -0.090	42	2	34		30	+0 -0.021

※All are permanent stores, L size allowed processing length to change shorter. Contact Chena to check.

※The corresponding aperture and Shaft diameter are recommend size.

Copyright © CHENA INDUSTRIAL CO.,LTD ALL RIGHTS RESERVED.