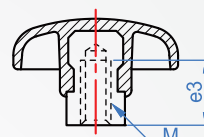
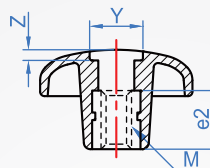
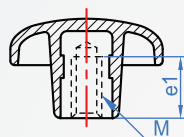
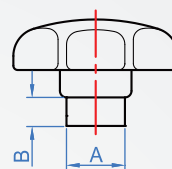
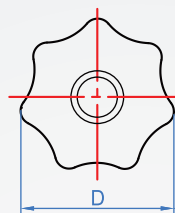
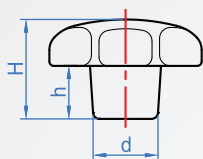
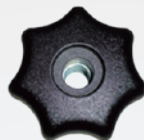


Heptagon knob
HA978
Female thread



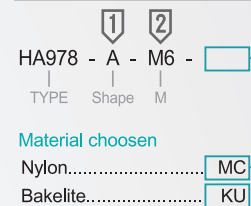
A : blind hole

B : Through hole

C : Protruding shaft

Shape	Material	Thread
A、B、C	Nylon + Glassfiber	Galvanized steel
A、C	Bakelite	

How to order



Shape	Coarse thread		Common dimensions				Through hole			Protruding shaft		Unit: mm
	M	D	d	H	h	e1	e2	Y	Z	e3	A	
A	*M4	20	6.5	13	7	6.5	—	—	—	—	—	—
	M5	25	9.5	16	8	9.5	—	—	—	—	—	—
A B C	M6	32	12	20	10	12	9	11	4	12	12	8.5
	M8	40	14	25	13	14	12	14	4.3	14	14	10
	M10	50	18	32	17	18	16	18	5.3	18	18	10
	M12	63	22	40	21	22	21	22	5	22	20	14

*M4 only have A shape : blind hole, bakelite knob, thread is Copper.