

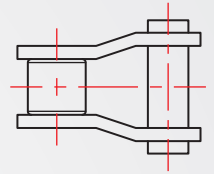
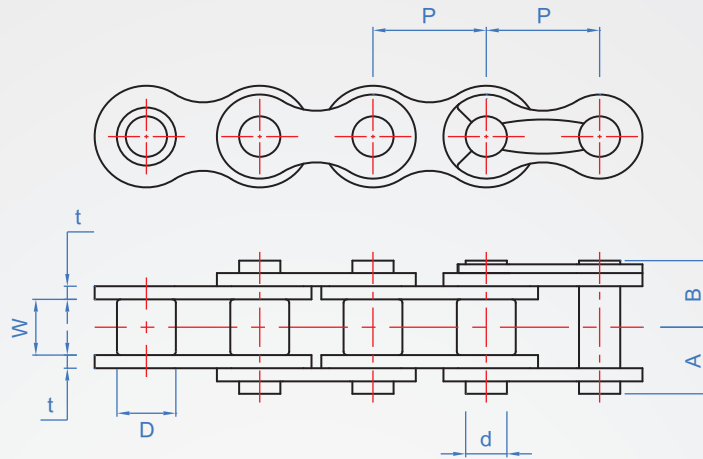
ANSI · JIS standard

RS

Material

Steel

※Another SUS specification



How to order

① RS40 - ② 12
No. Number of links

①

②

unit : mm

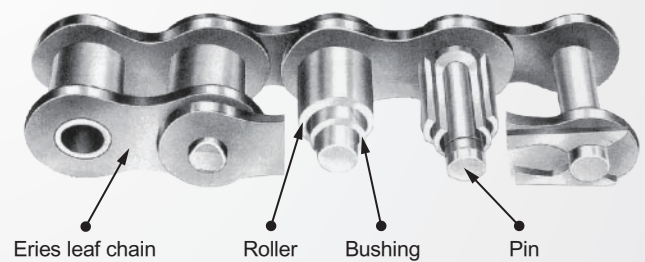
No.	Number of links	Boxed	P	W	t	H	D	d	A	B	Average breaking strength kgf	Max. allowable tension k · N	weight kg/m
25	4 ~ Specify a multiple of 2	480 Section	6.35	3.2	0.7	5.85	3.3	2.3	4.8	3.9	4.2	0.64	0.13
35		320 Section	9.525	4.8	1.25	9	5.08	3.58	6.7	6.1	10.5	2.16	0.36
40		240 Section	12.7	7.95	1.5	12	7.95	3.96	9.7	8.1	17.2	2.28	0.66
50		192 Section	15.875	9.55	2	15	10.16	5.08	12.1	10.4	29.0	3.63	1.08
60		160 Section	19.05	12.7	2.4	18	11.91	5.95	14.7	12.7	40.5	6.37	1.6
80		120 Section	25.4	15.9	3.2	24	15.88	7.94	18.8	16.3	73.0	8.83	2.7

Characteristics

※The chain is mainly composed of a chain piece, a bushing, a pin and a roller, as shown in the right figure.

1. Eries leaf chain : The main force parts, so the chain requires good tensile strength, seismic strength and fatigue strength.
2. Pin : Mainly supporting the load on the chain, the pin is required to have good shear strength degree, bending strength, especially its wear resistance.
3. Roller : When the chain is engaged with the gear, the bending direction of the chain can be smoothly changed, and the chain is protected from the impact force from the gear, so the roller is required to have good earthquake resistance and wear resistance.
4. Bushing : The bushing can avoid the impact force generated when the pin is directly engaged from the chain and the gear, and has good seismic strength and wear resistance.

Chain structure diagram



Spring clamp type RS25~60

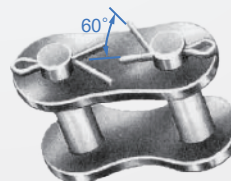


※Features: Suitable for connecting links of small roller chains below RS60.

※After inserting the connecting link on the latch during connection, insert the spring clip exactly into the two pin slots of the connecting link.

※Please note that if the spring clip is over-opened, it will not be properly inserted and will fall off; the mounting direction of the spring clip is normally facing the direction of the roller chain.

Cotter pin type RS80



※Features: high versatility, high strength, free of charge transmission.

※Please note that the opening pin opening angle should be set to about 60° .

※Do not use used cotter pins.