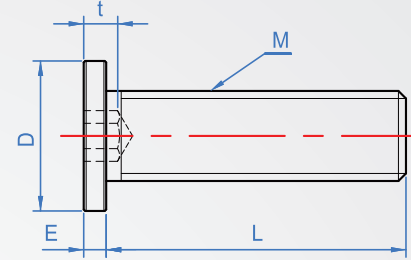
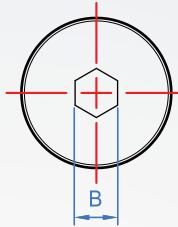


Hex socket extra low head cap screw

WA733-Ti

Titanium - JIS



※ Titanium hex socket extra low head cap screw three major properties

1. Lightweight high strength

The density of titanium is about 60% in general steel and stainless steel, and tensile strength is comparable to stainless steel, achieve weight goals also ensuring titanium socket extra low head cap screw strength(Tensile strength/Density) higher than other materials.

Titanium Tensile strength 500 N/mm²_(min)
Density 4.51g/cm³

Stainless steel Tensile strength 500 N/mm²_(min)
Density 7.93g/cm³

Reference : JIS B 1051-1991
 JIS B 1054-1995

2. Excellent corrosion resistance and drug tolerance

Different from stainless steel, titanium passive film chlorine is also difficult to destroy. Highly resistant to sea water. For nitrate and chromic acid like acidity, also excellent corrosion resistance.

3. Nonmagnetic permeability 1.0001

Also suitable for processing because there is no magnetic. The most suitable use for the non-magnetic.

Titanium size chart

How to order

WA733 - M3x0.4 - 6 - Ti
 TYPE MxP L Material

1		2			Unit: mm					
M x Pitch	L (Quality g)				D	E	B	t max	Max torque N · m	
M3 x 0.4	6	8	10		6	1.3	1.5	2	0.2	
M4 x 0.45		8	10	12	8	1.5	2	2.5	0.4	
M5 x 0.5			10	12	9	1.5	3	3	1	
M6 x 0.7			10	12	10	1.5	3	4	2	
			1.281	1.478					1.867	