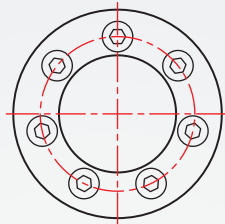
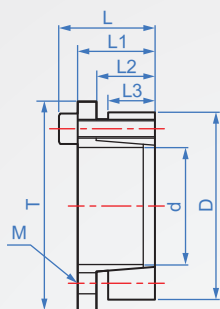


Flange - short LP457



Material	Finish	How to order	
S45C	—	LP457 - 11 -	TYPE d
	Dye black		
	Electroless nickel		
Installation example		Select surface treatment	
		No treatment.....	<input type="checkbox"/>
		Dye black.....	<input type="checkbox"/> B
		Electroless nickel.....	<input type="checkbox"/> TN



unit : mm

d	D	T	L	L1	L2	L3	Screw rotation torque		Surface pressure Mpa	Allowable torque Nm	Axial thrust KN	weight g																
							Count-M	N.m																				
8	22	25	21	17	13	10	3-M4	3.9	70	18	4.7	30																
10	24	27					4-M4		87	30	6.2	60																
11	25	28					5-M4		100	47	7.8	70																
12	26	29							97	50																		
13	27	30							87	70																		
14	31	34	26	21	16	12.5	4-M5	8	84	75	10	80																
15	32	35							6-M5	81	80		12.5	90														
16	33	36					99			105	100																	
17	34	37					96			110	110																	
18	35	38					34		28	22	17	6-M6	17	100	290	30	260											
19	47	56	7-M8	17	100	17		100							320	32		270										
20	47	56													8-M6	17			100	17	100	360	34	320				
22	47	56																				8-M6			17	100	17	100
24	50	59	8-M6					17							100			17			100		500	65				
25	50	59										7-M8		17			100						17					
28	55	64	7-M8	17	100	17															100	770		100				380
30	55	64														8-M8			17	100		17						
32	60	69	8-M8									17									100			17	100	910	85	700
35	60	69						9-M8							17			100								17		
38	65	74	9-M8				17		100	17	100		1000	100		780												
40	65	74		8-M8	17	100							17				100						1500		100		830	
42	75	84	8-M8					17			100			17		100			2000	140		1330						
45	75	84										8-M8							17		100		17	100				2100
48	80	89	9-M8	17											100	17	100	2500		160		1480						
50	80	89					9-M8		17	100								17							100	2700	160	1550
55	85	94	9-M8		17	100						17	100				3200			195		1630						
60	90	99						8-M10			17			100			17							100		4900		
65	95	104	8-M10				17						100						17	100	5300	200	2600					
70	110	119		9-M10											17	100					17				100	10200	216	2800
75	115	124	9-M10					17	100	17								100		10600		216	3000					
80	120	129			10-M10	17						100								17				100		13000		
85	125	134	10-M10	17							100			17			100	18900				333	4900					
90	130	139					11-M14						17					100	17						100	20500	362	5200
95	135	144	11-M14		17										100	17	100				25000	400	5500					
100	145	154						12-M14	17	100											17			100		29000		
110	155	164	12-M14			17	100					17					100			34000		500	8150					
120	165	174		15-M14							17			100						17					100	36000	500	9500
130	180	189	15-M14					17					100				17	100	47500			500	9500					
140	190	199			15-M14										17	100			17					100		50000		
150	200	209	15-M14	17					100	17								100				500	9900					
160	210	219				15-M14	17					100									17				100		500	9900
170	225	234	15-M14		17						100			17				100				500	9900					
180	235	244						15-M14					17				100			17				100				
190	250	259	15-M14			17									100	17		100				500	9900					
200	260	269		15-M14					17	100									17						100		500	9900

Copyright © CHENA INDUSTRIAL CO., LTD ALL RIGHTS RESERVED.