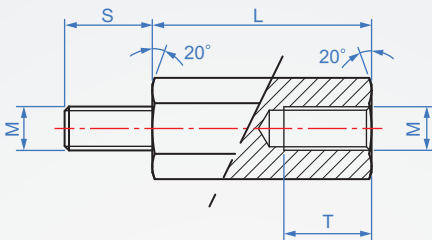
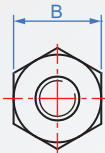


External teeth/internal teeth

SU683

Stainless steel



L tolerance : $<60 \pm 0.1$
 $>60 \pm 0.2$

Material

Finish

SUS304

Remove oil

How to order

SU683 - 6 - M4 - 18
TYPE B M L

1		2				unit:mm	
B	M	Pitch	L			S	T
			Designate1 mm	Designate5 mm	Designate10 mm		
4	M2	0.4	6~8、11、12、14	-	-	4	4
5	M2.5	0.45	8~16、18	20 ~ 30	-	6	6
5	M3	0.5	8~29	30 ~ 60	70 ~ 80		
6	M4	0.7	8、12、16、18	10 ~ 50	60 ~ 70	8	8
7	M5	0.8	8、12、16	10 ~ 70	80 ~ 100		
10	M6	1.0	12	15 ~ 50	60 ~ 120	10	10

■ Short size : thread depth reference

B	M	L	S	T
4	M2	4	4	2.5
		5		3
5	M2.5、M3	4	6	2.5
		5		3.5
		6		4.5
6	M4	5	6	3.5
		6		4.5
7	M5	8	8	6
8	M6	10	10	8

※Short size specifications will not be complete, please ask before ordering.