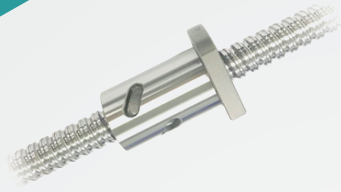
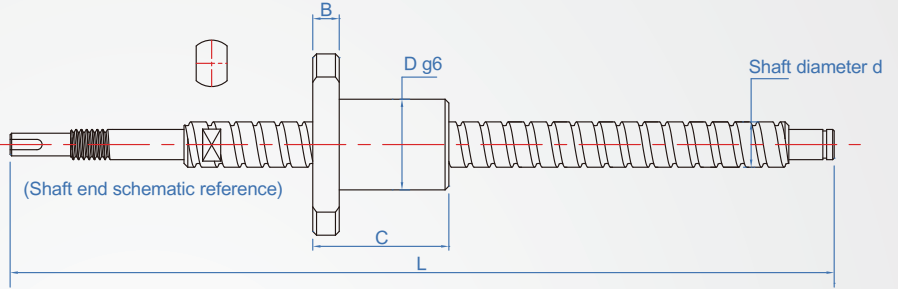
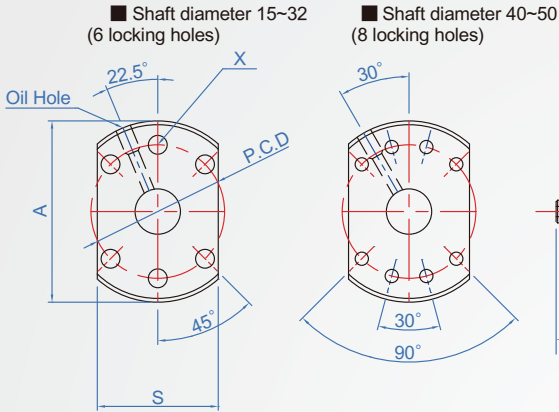


Shaft diameter 14~40

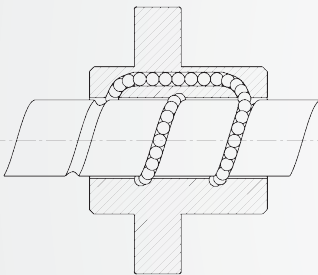
C series
Quiet type



Precision	screw	Shaft hardness		Nuts	
		Material	Hardness	Material	Hardness
C7	Transformation grade	S55C	Tempered Fire (HRC60)	SCM415H	Tempering (HRC60)
C5	Grinding grade				



Quiet Nut Features/Construction
Specially designed recirculation device to provide smooth operation of steel balls during fast movement and reduce noise value.



Lead accuracy (JIS B 1192) Unit : mm

Accuracy level	C7	C10
Cumulative lead time error	±0.05/300	±0.21/300

Tolerance of the accumulated lead error ($\pm E_c$) and variation (e) of the base lead for an arbitrary 300mm effective thread

Axial standard clearance Unit : mm

Shaft diameter	Axial clearance(max)
15~28	0.10
30~32	0.14
36~45	0.17
50	0.20

How to order

① TYPE C - 1505 - 300 - C7 - ② precision

① No. L

Select semi-finished & finished products

...Full screw thread unmachined

.....Shaft end machining(with drawing)

Select guide rod accuracy
C5 (for grinding grade screw) C5

Select axial clearance
Standard clearance..... ZF

0 preload..... Z0

Light preload...(Only used in C5 class) Z1

No.	d Guide	Guide	L Designation 1mm	A	B	C	D	S	P.C.D	X	Ball Diameter	Oil Hole	Basic load (kgf)	
													Ca(Move) kN	Ca(Quiet) kN
1505	15	5	150 ~ 1000	48	10	36	28	40	38	5.5	2.778	M6	1167	1536
1510		10				46							898	1132
1516		16				45							629	768
1520		20				54								
1610	16	10	160 ~ 1200	12	43	61	3.175	1180	1496	6.6	3.5	M6	2067	3280
1616		16			61								2481	3851
2020	20	20	200 ~ 1500	58	10	55	36	44	47	9	3.175	M6	1659	2464
2510		10				64							40	48
2525	25	25	250 ~ 1500	74	12	67	47	56	60	9	3.969	M6	2481	3851
3220		20				78							50	62
3232	32	32	300 ~ 2000	86	16	82	56	65	71	9	4.762	M8	3782	6468
4020		20				93							63	70
4040	40	40	400 ~ 2000	95	18	100	65	72	80	9	5.556	M8	5778	11753
5020		20				110							121	75