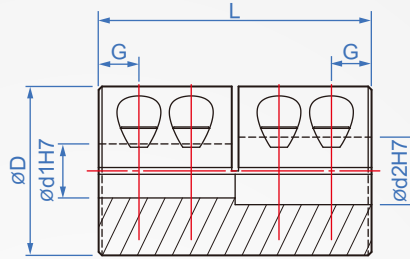
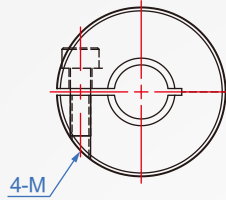


Steel body type - extended

GZ442

Clamping



※Features:

This type increases the overall length by more than 20%, compared with the general type (CH442). Has better grip and torque.

ontology

screw

A6061
(white anode)
SUS304

SCM435
(blackened)

How to order

1 2
GZ442 - 16 - 5x6
TYPE D d1xd2

Choose body material

A6061.....
SUS304..... **SUS**

outer diameter D	Bore designation d1, d2		material	L	G	M	General Torque (N · M)	maximum torque (N · M)		Maximum speed (rpm/min)	moment of inertia (kg · m ²)		quality(g)	
	min.	max.						AL	SUS		AL	SUS	AL	SUS
16	3	~ 8	AL (aluminum alloy)	24	3.75	M2.5	0.8	5	10	9400	2.9x10 ⁻⁷	7.9x10 ⁻⁷	13	27
20	4	~ 10		30	3.75	M2.5	0.8	10	20	7500	8.6x10 ⁻⁶	2.3x10 ⁻⁷	25	45
25	5	~ 12		36	6	M3	1.2	12	24	6000	2.7x10 ⁻⁶	7.2x10 ⁻⁶	43	87
29	6	~ 14	SUS (Stainless steel)	38	7.8	M4	2.5	14	28	5500	2.5x10 ⁻⁶	8.0x10 ⁻⁶	48	105
32	6	~ 16		41	7.75		M4	2.5	15	30	4700	7.1x10 ⁻⁶	2.4x10 ⁻⁵	65
40	8	~ 20		52	10.5	M5	5	19	38	4000	1.45x10 ⁻⁵	3.75x10 ⁻⁵	150	450
50	10	~ 25		66	16	M6	8	45	90	4000	7.0x10 ⁻⁵	1.75x10 ⁻⁴	280	840

Unit : mm