

七爪電木旋鈕 VN979

內螺牙

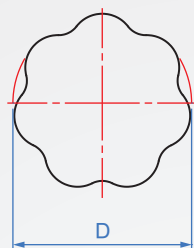
握柄

黑色電木

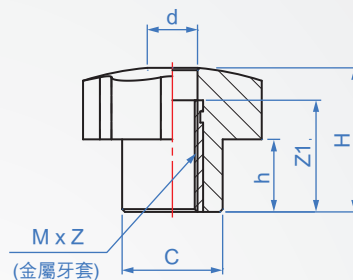
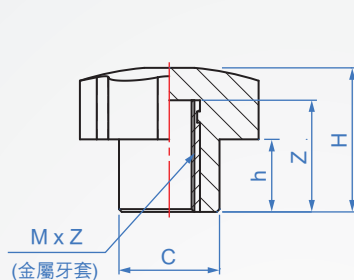
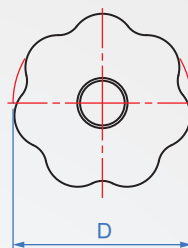
耐油性、耐磨性。



A - 盲孔



B - 通孔



How to order

1 2
 VN979 - A - M6
 TYPE 外形 螺紋

單位 : mm

外形	M 螺紋	Pitch	C	d	D	h	H	盲孔 Z	通孔 Z1	質量(g)	
										盲孔	通孔
A (盲孔)	M6	1	15	8	25	9	20	12	12	9.7	8.7
	M8	1.25	18	9	32	13	26	16	20	18.6	17.8
	M10	1.5	22	11	40	15	30	18	20	30.6	30.7
B (通孔)	M12	1.75	29	15	50	16	32	25	25	53.9	56.7
	M16	2	31	18	63	18	38	28	28	94.9	88.9