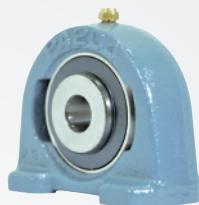
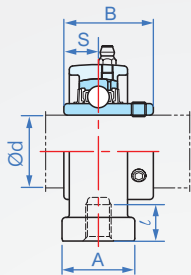
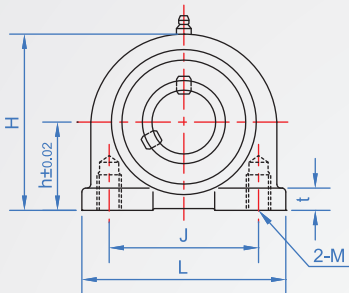


底部安裝型
RN511 鑄鐵



本體	軸承	止附螺絲	油嘴	使用溫度
鑄鐵	SUJ2	SCM435	Cu銅	-10°C~ 80°C

軸承NBR橡膠密封

How to order

1
RN511 - 12
| TYPE | 內徑

版權所有
重製必究



單位 :mm

d	主要尺寸							基本額定荷重(kN)				質量(g)	
	A	B	H	h	J	L	M	ℓ	S	t	Cr		Cor
12	38	31	62	30.2	52	76	M10x1.5	12	12.7	8	12.8	6.6	590
15	38	31	62	30.2	52	76	M10x1.5	12	12.7	8	12.8	6.6	570
17	38	31	62	30.2	52	76	M10x1.5	12	12.7	8	12.8	6.6	560
20	38	31	62	30.2	52	76	M10x1.5	12	12.7	8	12.8	6.6	540
25	38	34.1	72	36.5	56	84	M10x1.5	15	14.3	10	14	7.9	730
30	48	38.1	84	42.9	66	94	M14x2	18	15.9	10	19.6	11.3	1110
35	48	42.9	95	47.6	80	110	M14x2	20	17.5	12	25.9	15.4	1630
40	54	49.2	100	49.2	84	116	M14x2	20	19	12	29.3	17.9	1850
45	54	49.2	108	54.2	90	120	M14x2	25	19	12	33	20.5	2110
50	60	51.6	116	57.2	94	130	M16x2	25	19	14	35.5	23.2	2520

1kgf = 9.8N