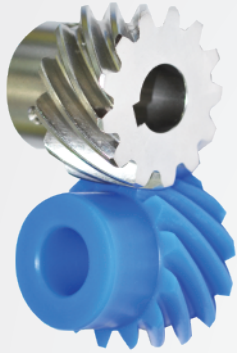
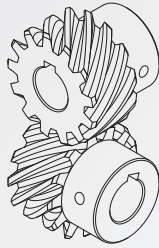
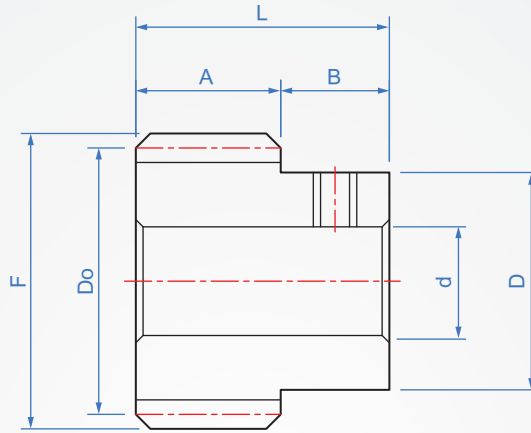
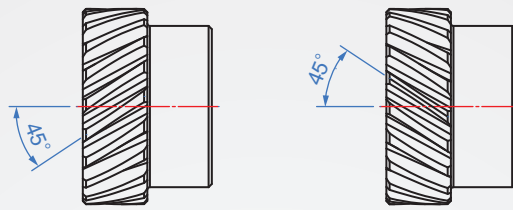


壓力角20°
SG327
螺旋角45°



螺旋方向：L (左)

螺旋方向：R (右)



材質

表面處理

S45C

-

染黑

無電解鍍

SUS304

-

MC尼龍

-

精度等級：JIS N 9級

How to order

1 2 3 4
SG327 - R - M1 - 13 - P8 - TB
方向 模數 齒數 孔形
軸徑

選擇表面處理

S45C..... T
S45C+染黑..... TB
S45C+無電解鍍..... TN
SUS304..... SUS
MC尼龍..... MC

可指定D徑變更

例：原D徑15，變更13

1 2 3 4

單位：mm

方向	模數	齒數	孔形	最小孔徑 d	齒寬 A	輪轂長 B	總長 L	輪轂 D	齒數	節圓 Do	外徑 F																					
L 左螺旋	M1	13	<p>H 圓孔</p>	6~	10	10	20	15	13	18.38	20.38																					
		15		18				15	21.21	23.21																						
		20		25				20	28.28	30.28																						
		26		30				26	36.77	38.77																						
	M1.5	30		35	30	42.43	44.43																									
		10		15	10	25	16	10	21.21	24.21																						
		13					23	13	27.58	30.58																						
		15					25	15	31.82	34.82																						
		20					30	20	42.43	45.43																						
		26					40	26	55.15	58.15																						
	30	45					30	63.64	66.64																							
	M2	10		<p>圓孔+攻牙</p>	12~	20	15	35	22	10	28.28	32.28																				
13		30	13		36.77				40.77																							
15		35	15		42.43				46.43																							
20		45	20		56.57				60.57																							
26		60	26		73.54				77.54																							
30		65	30		84.85				88.85																							
M2.5	10	<p>鍵槽+攻牙</p>	12~		22	16	38	26	10	35.36	40.36																					
	13		35					13	45.96	50.96																						
	15		40					15	53.03	58.03																						
	20		60					20	70.71	75.71																						
	26		70					26	91.92	96.92																						
	30		80					30	106.07	111.07																						
M3	10		<table border="1"> <tr> <th>軸孔徑</th> <th>攻牙</th> </tr> <tr> <td>6~17</td> <td>M4</td> </tr> <tr> <td>18~30</td> <td>M5</td> </tr> </table>	軸孔徑	攻牙	6~17	M4	18~30	M5	15~	25	18	43	34	10	42.43	48.43															
	軸孔徑			攻牙																												
	6~17			M4																												
	18~30			M5																												
	13			45	13	55.15	61.15																									
15	50			15	63.64	69.64																										
20	60	20		84.85	90.85																											
26	80	26		110.31	116.31																											
M4	30	<table border="1"> <tr> <th>軸孔徑</th> <th>kw(Js9)</th> <th>kh</th> <th>攻牙</th> </tr> <tr> <td>8~10</td> <td>3</td> <td>1.4</td> <td rowspan="3">M4</td> </tr> <tr> <td>NK10</td> <td>4</td> <td>1.8</td> </tr> <tr> <td>11~12</td> <td>4</td> <td>1.8</td> </tr> <tr> <td>13~17</td> <td>5</td> <td>2.3</td> <td rowspan="2">M5</td> </tr> <tr> <td>18~22</td> <td>6</td> <td>2.8</td> </tr> </table>		軸孔徑	kw(Js9)	kh	攻牙	8~10	3	1.4	M4	NK10	4	1.8	11~12	4	1.8	13~17	5	2.3	M5	18~22	6	2.8	20~	30	20	50	90	30	127.28	133.28
	軸孔徑			kw(Js9)	kh	攻牙																										
	8~10			3	1.4	M4																										
	NK10			4	1.8																											
	11~12		4	1.8																												
	13~17		5	2.3	M5																											
18~22	6		2.8																													
10	45		10	56.57	64.57																											
13	60		13	73.54	81.54																											
15	70		15	84.85	94.85																											
20	90		20	113.14	121.14																											
26	100		26	147.08	155.08																											
30	110	30	169.71	177.71																												